

BZW2 Antibody

Catalog No: #46935

Orders: order@signalwayantibody.comSupport: tech@signalwayantibody.com

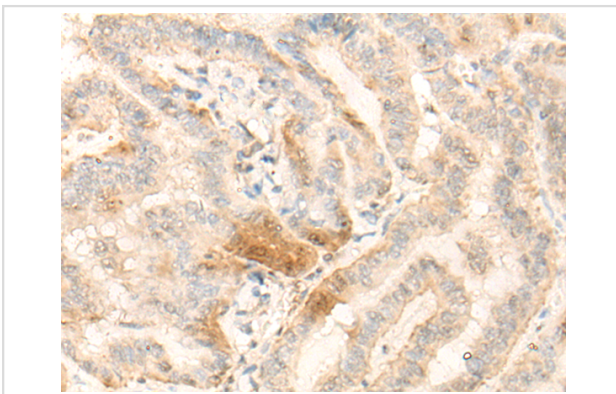
Description

Product Name	BZW2 Antibody
Host Species	Rabbit
Clonality	Polyclonal
Purification	Antigen affinity purification
Applications	IHC
Species Reactivity	Hu
Specificity	The antibody detects endogenous levels of total BZW2 protein.
Immunogen Type	protein
Immunogen Description	Fusion protein of human BZW2
Target Name	BZW2
Other Names	MST017; HSPC028; MSTP017
Accession No.	Swiss-Prot#:Q9Y6E2NCBI Gene ID:28969Gene Accssion:BC003056
Concentration	0.9mg/ml
Formulation	Rabbit IgG in pH7.4 PBS, 0.05% NaN ₃ , 40% Glycerol.
Storage	Store at -20C

Application Details

Immunofluorescence: 1: 20-100

Images



The image is immunohistochemistry of paraffin-embedded Human thyroid cancer tissue using 46935(BZW2 Antibody) at dilution 1/25. (Original magnification: ?00)

Background

May be involved in neuronal differentiation.

Published Papers

el at., Polyamine metabolism patterns characterized tumor microenvironment, prognosis, and response to immunotherapy in colorectal

cancerInCancer Cell IntOn2023 May 18byEnkui Zhang,Chengsheng Ding et al..PMID:, , (2023)

PMID:

el at., Polyamine metabolism patterns characterized tumor microenvironment, prognosis, and response to immunotherapy in colorectal cancer., , (2022)

PMID:

Note: This product is for in vitro research use only and is not intended for use in humans or animals.