

## VAMP1 Antibody

Catalog No: #40289

Package Size: #40289-1 50ul #40289-2 100ul

Orders: [order@signalwayantibody.com](mailto:order@signalwayantibody.com)Support: [tech@signalwayantibody.com](mailto:tech@signalwayantibody.com)

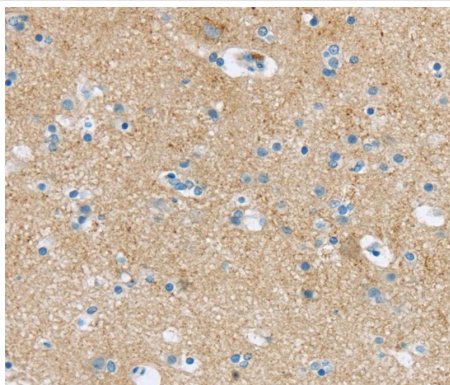
## Description

Product Name	VAMP1 Antibody
Host Species	Rabbit
Clonality	Polyclonal
Purification	Antigen affinity purification.
Applications	IHC
Species Reactivity	Hu
Specificity	The antibody detects endogenous levels of total VAMP1 protein.
Immunogen Type	Peptide
Immunogen Description	Synthetic peptide of human vesicle-associated membrane protein 1 (synaptobrevin 1)
Target Name	VAMP1
Other Names	SYB1; SPAX1; VAMP-1
Accession No.	Swiss-Prot:P23763 Gene Accssion:NP_055046
Concentration	1.5mg/ml
Formulation	Rabbit IgG in pH7.4 PBS, 0.05% NaN <sub>3</sub> , 40% Glycerol.
Storage	Store at -20°C

## Application Details

Immunohistochemistry:1:20-1:100

## Images



Immunohistochemical analysis of paraffin-embedded Human brain tissue using #40289 at dilution 1/25.

## Background

Synaptobrevins, syntaxins, and the synaptosomal-associated protein SNAP25 are the main components of a protein complex involved in the docking and/or fusion of synaptic vesicles with the presynaptic membrane. The protein encoded by this gene is a member of the vesicle-associated membrane protein (VAMP)/synaptobrevin family. Mutations in this gene are associated with autosomal dominant spastic ataxia 1. Multiple alternative splice variants have been described, but the full-length nature of some variants has not been defined.?

---

Note: This product is for in vitro research use only and is not intended for use in humans or animals.