

VLDLR Antibody

Catalog No: #40292



Package Size: #40292-1 50ul #40292-2 100ul

Orders: order@signalwayantibody.com

Support: tech@signalwayantibody.com

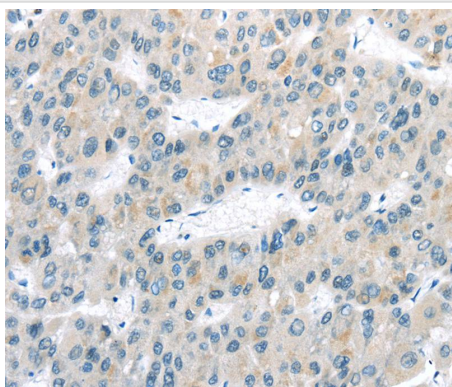
Description

Product Name	VLDLR Antibody
Host Species	Rabbit
Clonality	Polyclonal
Purification	Antigen affinity purification.
Applications	IHC
Species Reactivity	Hu
Specificity	The antibody detects endogenous levels of total VLDLR protein.
Immunogen Type	Peptide
Immunogen Description	Synthetic peptide of human very low density lipoprotein receptor
Target Name	VLDLR
Other Names	CARMQ1; CHRMQ1; VLDLRCH
Accession No.	Swiss-Prot:P98155 Gene Accssion:NP_003374
Concentration	2.7mg/ml
Formulation	Rabbit IgG in pH7.4 PBS, 0.05% NaN ₃ , 40% Glycerol.
Storage	Store at -20°C

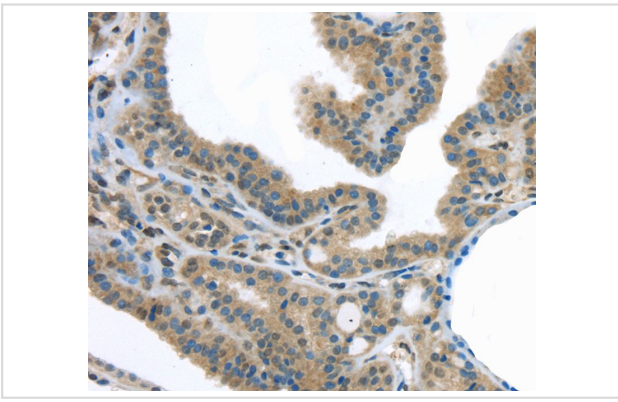
Application Details

Immunohistochemistry:1:30-1:150

Images



Immunohistochemical analysis of paraffin-embedded Human liver cancer tissue using #40292 at dilution 1/40.



Immunohistochemical analysis of paraffin-embedded Human thyroid cancer tissue using #40292 at dilution 1/40.

Background

The low density lipoprotein receptor (LDLR) gene family consists of cell surface proteins involved in receptor-mediated endocytosis of specific ligands. This gene encodes a lipoprotein receptor that is a member of the LDLR family and plays important roles in VLDL-triglyceride metabolism and the reelin signaling pathway. Mutations in this gene cause VLDLR-associated cerebellar hypoplasia. Alternative splicing generates multiple transcript variants encoding distinct isoforms for this gene.?

Note: This product is for in vitro research use only and is not intended for use in humans or animals.