

VPS4A Antibody

Catalog No: #40294



Package Size: #40294-1 50ul #40294-2 100ul

Orders: order@signalwayantibody.comSupport: tech@signalwayantibody.com

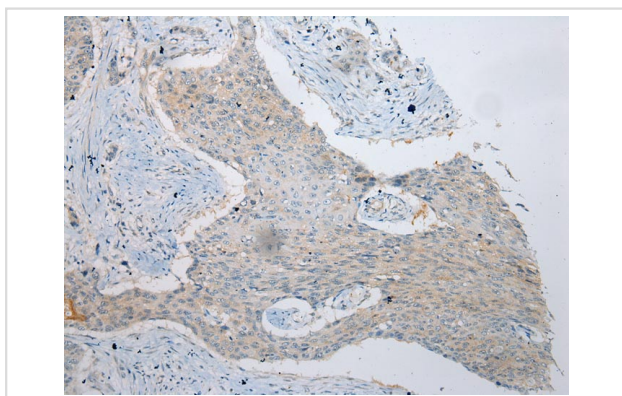
Description

Product Name	VPS4A Antibody
Host Species	Rabbit
Clonality	Polyclonal
Purification	Antigen affinity purification.
Applications	IHC
Species Reactivity	Hu
Specificity	The antibody detects endogenous levels of total VPS4A protein.
Immunogen Type	Peptide
Immunogen Description	Synthetic peptide of human vacuolar protein sorting 4 homolog A (S. cerevisiae)
Target Name	VPS4A
Other Names	SKD1; SKD2; VPS4; SKD1A; VPS4-1
Accession No.	Swiss-Prot:Q9UN37 Gene Accssion:NP_037377
Concentration	2.8mg/ml
Formulation	Rabbit IgG in pH7.4 PBS, 0.05% NaN ₃ , 40% Glycerol.
Storage	Store at -20°C

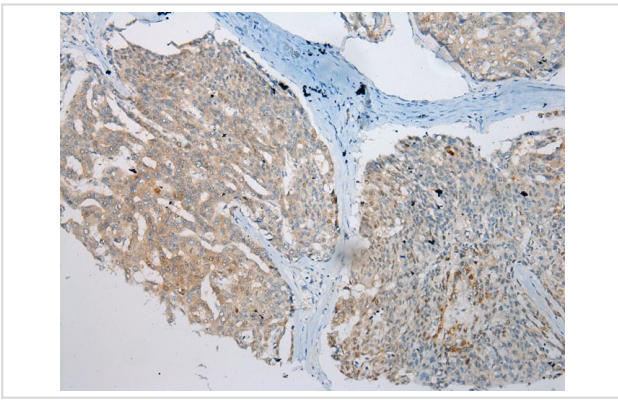
Application Details

Immunohistochemistry: 1:100-1:200

Images



Immunohistochemical analysis of paraffin-embedded Human Esophagus cancer tissue using #40294 at dilution 1/200.



Immunohistochemical analysis of paraffin-embedded Human Liver cancer tissue using #40294 at dilution 1/200.

Background

The protein encoded by this gene is a member of the AAA protein family (ATPases associated with diverse cellular activities), and is the homolog of the yeast Vps4 protein. In humans, two paralogs of the yeast protein have been identified. The former share a high degree of aa sequence similarity with each other, and also with yeast Vps4 and mouse Skd1 proteins. The mouse Skd1 (suppressor of K⁺ transport defect 1) has been shown to be really an yeast Vps4 ortholog. Functional studies indicate that both human paralogs associate with the endosomal compartments, and are involved in intracellular protein trafficking, similar to Vps4 protein in yeast. The gene encoding this paralog has been mapped to chromosome 16; the gene for the other resides on chromosome 18.

Note: This product is for in vitro research use only and is not intended for use in humans or animals.