

VPS26A Antibody

Catalog No: #40295

Package Size: #40295-1 50ul #40295-2 100ul

Orders: order@signalwayantibody.com

Support: tech@signalwayantibody.com

Description

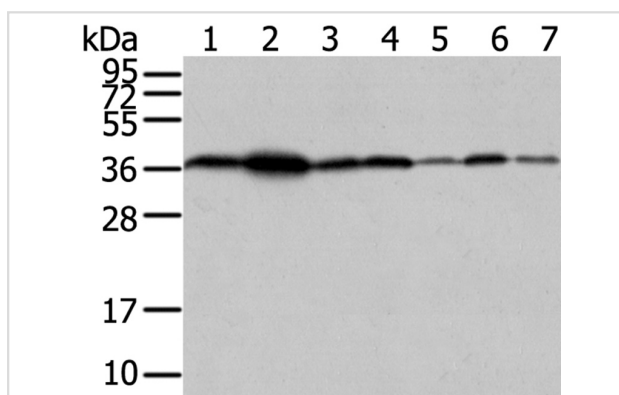
Product Name	VPS26A Antibody
Host Species	Rabbit
Clonality	Polyclonal
Purification	Antigen affinity purification.
Applications	WB IHC
Species Reactivity	Hu
Specificity	The antibody detects endogenous levels of total VPS26A protein.
Immunogen Type	Peptide
Immunogen Description	Synthetic peptide of human vacuolar protein sorting 26 homolog A (S. pombe)
Target Name	VPS26A
Other Names	HB58; PEP8A; VPS26; Hbeta58
Accession No.	Swiss-Prot:O75436 Gene Accssion:NP_004887
SDS-PAGE MW	38KD
Concentration	2.8mg/ml
Formulation	Rabbit IgG in pH7.4 PBS, 0.05% NaN ₃ , 40% Glycerol.
Storage	Store at -20°C

Application Details

Western blotting: 1:500-1:2000

Immunohistochemistry:1:30-1:150

Images



Gel: 12%SDS-PAGE

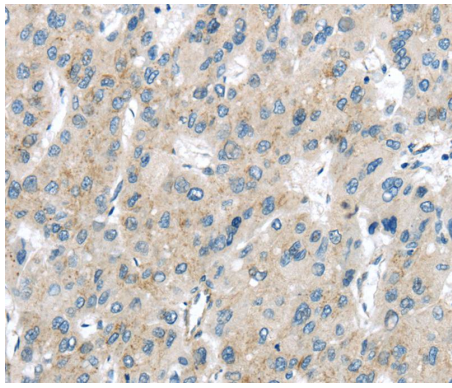
Lysates (from left to right): 293T, A431, hela and hepg2 cell, human fetal liver tissue, PC3 cell and human placenta tissue

Amount of lysate: 40ug per lane

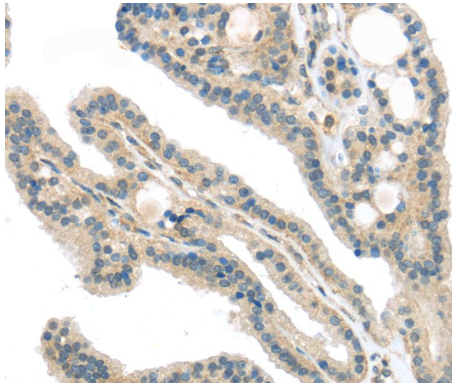
Primary antibody: 1/200 dilution

Secondary antibody dilution: 1/8000

Exposure time: 40 seconds



Immunohistochemical analysis of paraffin-embedded Human liver cancer tissue using #40295 at dilution 1/40.



Immunohistochemical analysis of paraffin-embedded Human thyroid cancer tissue using #40295 at dilution 1/40.

Background

This gene belongs to a group of vacuolar protein sorting (VPS) genes. The encoded protein is a component of a large multimeric complex, termed the retromer complex, involved in retrograde transport of proteins from endosomes to the trans-Golgi network. The close structural similarity between the yeast and human proteins that make up this complex suggests a similarity in function. Expression studies in yeast and mammalian cells indicate that this protein interacts directly with VPS35, which serves as the core of the retromer complex. Alternative splicing results in multiple transcript variants encoding different isoforms.

Note: This product is for in vitro research use only and is not intended for use in humans or animals.