

WDR91 Antibody

Catalog No: #40297



Package Size: #40297-1 50ul #40297-2 100ul

Orders: order@signalwayantibody.comSupport: tech@signalwayantibody.com

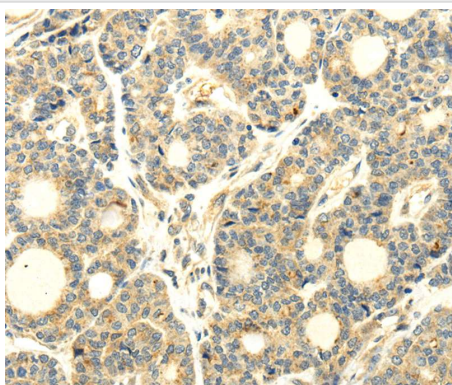
Description

Product Name	WDR91 Antibody
Host Species	Rabbit
Clonality	Polyclonal
Purification	Antigen affinity purification.
Applications	IHC
Species Reactivity	Hu
Specificity	The antibody detects endogenous levels of total WDR91 protein.
Immunogen Type	Peptide
Immunogen Description	Synthetic peptide of human WD repeat domain 91
Target Name	WDR91
Other Names	HSPC049
Accession No.	Swiss-Prot:A4D1P6 Gene Accssion:NP_054868
Concentration	1.4mg/ml
Formulation	Rabbit IgG in pH7.4 PBS, 0.05% NaN ₃ , 40% Glycerol.
Storage	Store at -20°C

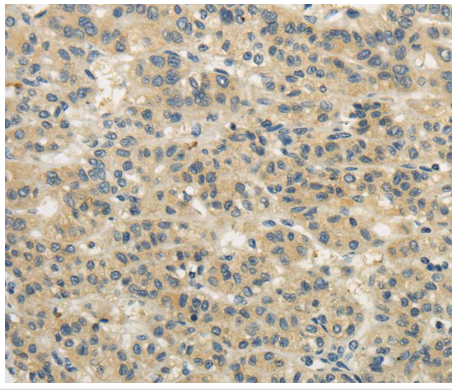
Application Details

Immunohistochemistry:1:25-1:100

Images



Immunohistochemical analysis of paraffin-embedded Human thyroid cancer tissue using #40297 at dilution 1/20.



Immunohistochemical analysis of paraffin-embedded Human liver cancer tissue using #40297 at dilution 1/20.

Background

WDR91 (WD repeat-containing 91) contains seven WD repeats and is a member of the WD family of proteins. The WD repeat is defined by four or more repeating units of a conserved core of approximately 40 amino acids ending with tryptophan-aspartic acid (WD). WD repeats may serve as sites of protein-protein interaction for adaptor proteins and facilitate multiprotein complex formation. WD proteins are involved in a variety of cellular processes. The function of WDR91 has not been characterized.

Note: This product is for in vitro research use only and is not intended for use in humans or animals.