

DNASE1L1 Antibody

Catalog No: #47070

Orders: order@signalwayantibody.comSupport: tech@signalwayantibody.com

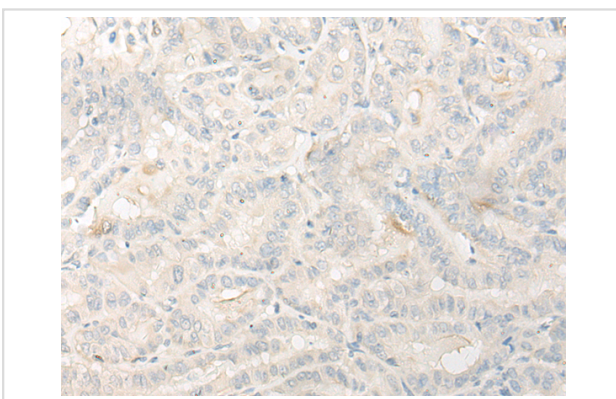
Description

Product Name	DNASE1L1 Antibody
Host Species	Rabbit
Clonality	Polyclonal
Purification	Antigen affinity purification
Applications	WB, IHC
Species Reactivity	Hu
Specificity	The antibody detects endogenous levels of total DNASE1L1 protein.
Immunogen Type	protein
Immunogen Description	Fusion protein of human DNASE1L1
Target Name	DNASE1L1
Other Names	XIB; G4.8; DNL1L; DNASEX; DNAS1L1
Accession No.	Swiss-Prot#:P49184NCBI Gene ID:1774Gene Accssion:BC028092
Calculated MW	34 kDa
Concentration	1.1mg/ml
Formulation	Rabbit IgG in pH7.4 PBS, 0.05% NaN ₃ , 40% Glycerol.
Storage	Store at -20C

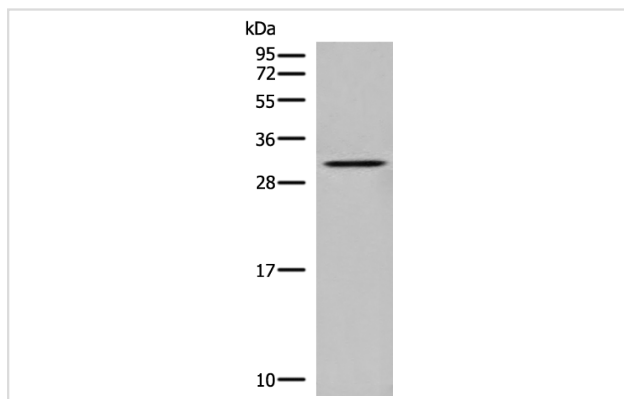
Application Details

Western blotting:1:200-1000Immunofluorescence:1: 20-100

Images



The image is immunohistochemistry of paraffin-embedded Human thyroid cancer tissue using 47070(DNASE1L1 Antibody) at dilution 1/30. (Original magnification: ?00)



Gel: 12%SDS-PAGE
Lysate: 40 µg, Lane: Human heart tissue lysate
Primary antibody:DNASE1L1 Antibody at dilution 1/400
Secondary antibody: Goat anti rabbit IgG at 1/8000 dilution
Exposure time: 5 minutes

Background

This gene encodes a deoxyribonuclease protein that shows high sequence similarity to DNase I. The encoded protein is localized to the endoplasmic reticulum and modified by N-linked glycosylation. Alternate transcriptional splice variants encoding the same protein have been observed.?

Note: This product is for in vitro research use only and is not intended for use in humans or animals.