

DND1 Antibody

Catalog No: #47071

Orders: order@signalwayantibody.comSupport: tech@signalwayantibody.com

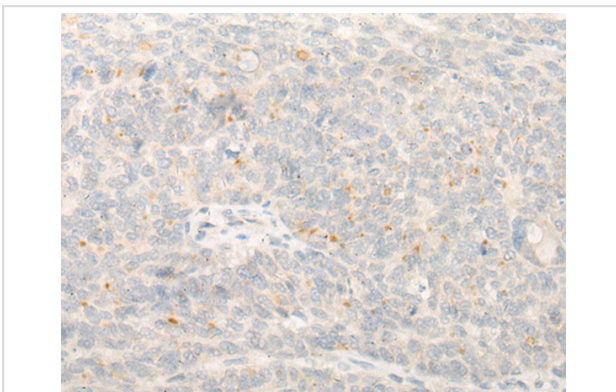
Description

Product Name	DND1 Antibody
Host Species	Rabbit
Clonality	Polyclonal
Purification	Antigen affinity purification
Applications	IHC
Species Reactivity	Hu
Specificity	The antibody detects endogenous levels of total DND1 protein.
Immunogen Type	peptide
Immunogen Description	Synthetic peptide of human DND1
Target Name	DND1
Other Names	RBMS4
Accession No.	Swiss-Prot#:Q8IYX4 NCBI Gene ID:373863 Gene Accssion:NP_919225
Concentration	0.6mg/ml
Formulation	Rabbit IgG in pH7.4 PBS, 0.05% NaN ₃ , 40% Glycerol.
Storage	Store at -20C

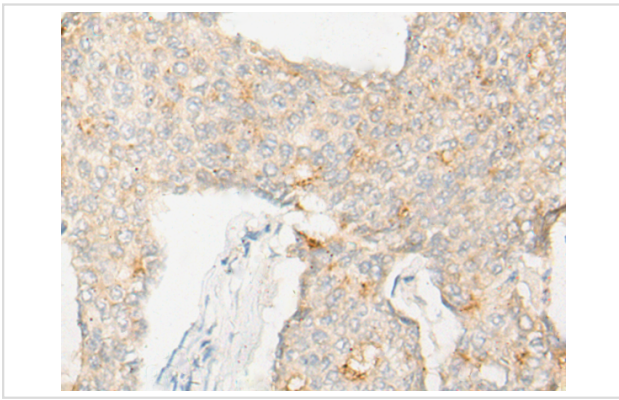
Application Details

Immunofluorescence: 1: 20-100

Images



The image is immunohistochemistry of paraffin-embedded Human ovarian cancer tissue using 47071(DND1 Antibody) at dilution 1/20. (Original magnification: ?00)



The image is immunohistochemistry of paraffin-embedded Human breast cancer tissue using 47071(DND1 Antibody) at dilution 1/20. (Original magnification: 200)

Background

This gene encodes a protein that binds to microRNA-targeting sequences of mRNAs, inhibiting microRNA-mediated repression. Reduced expression of this gene has been implicated in tongue squamous cell carcinoma. Two pseudogenes of this gene are located on the long arm of chromosome 17.

Note: This product is for in vitro research use only and is not intended for use in humans or animals.