

## DOC2B Antibody

Catalog No: #47073

Orders: [order@signalwayantibody.com](mailto:order@signalwayantibody.com)Support: [tech@signalwayantibody.com](mailto:tech@signalwayantibody.com)

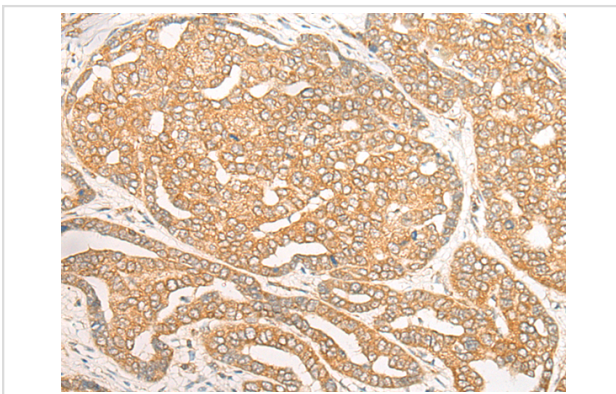
## Description

Product Name	DOC2B Antibody
Host Species	Rabbit
Clonality	Polyclonal
Purification	Antigen affinity purification
Applications	IHC
Species Reactivity	Hu
Specificity	The antibody detects endogenous levels of total DOC2B protein.
Immunogen Type	peptide
Immunogen Description	Synthetic peptide of human DOC2B
Target Name	DOC2B
Other Names	DOC2BL
Accession No.	Swiss-Prot#:Q14184 NCBI Gene ID:8447Gene Accssion:NP_003576
Concentration	1.1mg/ml
Formulation	Rabbit IgG in pH7.4 PBS, 0.05% NaN <sub>3</sub> , 40% Glycerol.
Storage	Store at -20C

## Application Details

Immunofluorescence: 1: 20-100

## Images



The image is immunohistochemistry of paraffin-embedded Human liver cancer tissue using 47073(DOC2B Antibody) at dilution 1/25. (Original magnification: ?00)

## Background

There are at least two protein isoforms of the Double C2 protein, namely alpha (DOC2A) and beta (DOC2B), which contain two C2-like domains. DOC2A and DOC2B are encoded by different genes; these genes are at times confused with the unrelated DAB2 gene which was initially named DOC-2. DOC2B is expressed ubiquitously and is suggested to be involved in Ca(2+)-dependent intracellular vesicle trafficking in various types of cells.

---

Note: This product is for in vitro research use only and is not intended for use in humans or animals.