

DOCK9 Antibody

Catalog No: #47075

Orders: order@signalwayantibody.comSupport: tech@signalwayantibody.com

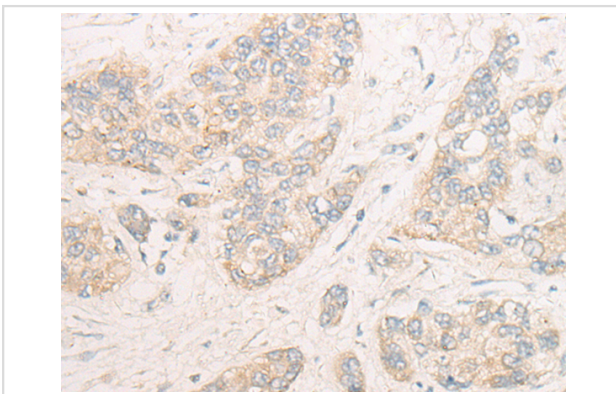
Description

Product Name	DOCK9 Antibody
Host Species	Rabbit
Clonality	Polyclonal
Purification	Antigen affinity purification
Applications	IHC
Species Reactivity	Hu
Specificity	The antibody detects endogenous levels of total DOCK9 protein.
Immunogen Type	peptide
Immunogen Description	Synthetic peptide of human DOCK9
Target Name	DOCK9
Other Names	ZIZ1; ZIZIMIN1
Accession No.	Swiss-Prot#:Q9BZ29 NCBI Gene ID:23348 Gene Accsion:NP_056111
Concentration	0.6mg/ml
Formulation	Rabbit IgG in pH7.4 PBS, 0.05% NaN ₃ , 40% Glycerol.
Storage	Store at -20C

Application Details

Immunofluorescence: 1: 20-100

Images



The image is immunohistochemistry of paraffin-embedded Human liver cancer tissue using 47075(DOCK9 Antibody) at dilution 1/20. (Original magnification: ?00)

Background

Guanine nucleotide-exchange factor (GEF) that activates CDC42 by exchanging bound GDP for free GTP. Overexpression induces filopodia formation.

Note: This product is for in vitro research use only and is not intended for use in humans or animals.