

WNK2 Antibody

Catalog No: #40302

Package Size: #40302-1 50ul #40302-2 100ul

Orders: order@signalwayantibody.comSupport: tech@signalwayantibody.com

Description

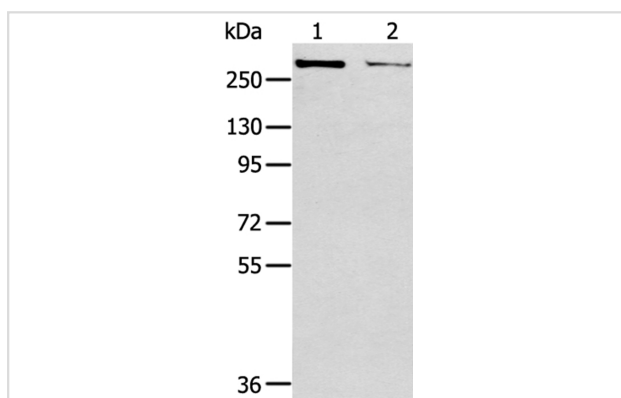
Product Name	WNK2 Antibody
Host Species	Rabbit
Clonality	Polyclonal
Purification	Antigen affinity purification.
Applications	WB IHC
Species Reactivity	Hu
Specificity	The antibody detects endogenous levels of total WNK2 protein.
Immunogen Type	Peptide
Immunogen Description	Synthetic peptide of human WNK lysine deficient protein kinase 2
Target Name	WNK2
Other Names	PRKWINK2; NY-CO-43; SDCCAG43; P/OKcl.13
Accession No.	Swiss-Prot:Q9Y3S1 Gene Accssion:NP_001269323
SDS-PAGE MW	243KD
Concentration	1.4mg/ml
Formulation	Rabbit IgG in pH7.4 PBS, 0.05% NaN ₃ , 40% Glycerol.
Storage	Store at -20°C

Application Details

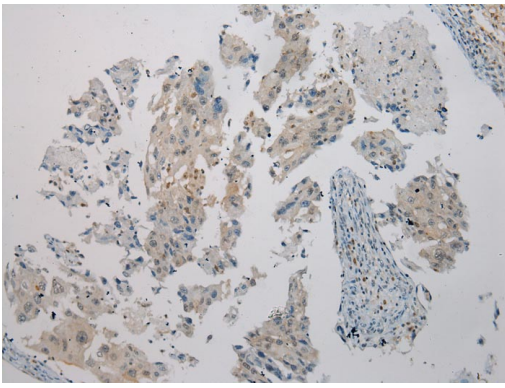
Western blotting: 1:200-1:1000

Immunohistochemistry: 1:100-1:200

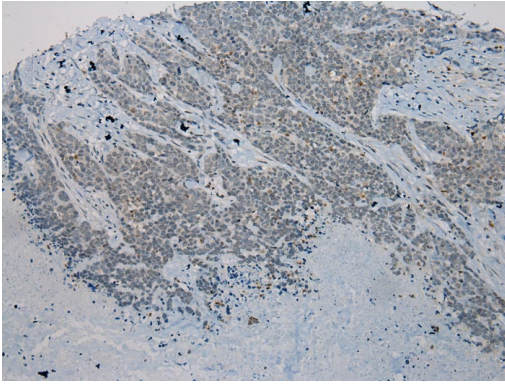
Images



Gel: 6%SDS-PAGE
 Lysates (from left to right): MCF7 and hela cell
 Amount of lysate: 40ug per lane
 Primary antibody: 1/200 dilution
 Secondary antibody dilution: 1/8000
 Exposure time: 10 minutes



Immunohistochemical analysis of paraffin-embedded Human Breast cancer tissue using #40302 at dilution 1/200.



Immunohistochemical analysis of paraffin-embedded Human Thyroid cancer tissue using #40302 at dilution 1/200.

Background

The protein encoded by this gene is a cytoplasmic serine-threonine kinase that belongs to the protein kinase superfamily. The protein plays an important role in the regulation of electrolyte homeostasis, cell signaling survival, and proliferation. Alternative splicing results in multiple transcript variants.

Note: This product is for in vitro research use only and is not intended for use in humans or animals.