

## DYNC1LI2 Antibody

Catalog No: #47087

Orders: [order@signalwayantibody.com](mailto:order@signalwayantibody.com)Support: [tech@signalwayantibody.com](mailto:tech@signalwayantibody.com)

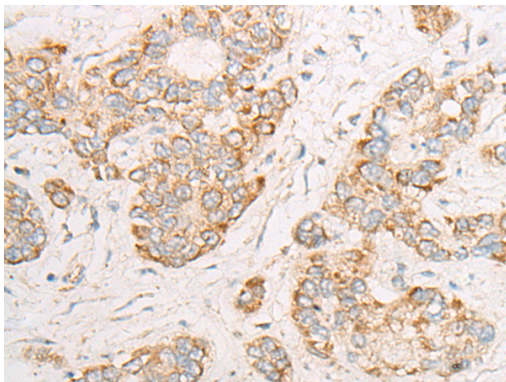
## Description

Product Name	DYNC1LI2 Antibody
Host Species	Rabbit
Clonality	Polyclonal
Purification	Antigen affinity purification
Applications	WB, IHC
Species Reactivity	Hu
Specificity	The antibody detects endogenous levels of total DYNC1LI2 protein.
Immunogen Type	peptide
Immunogen Description	Synthetic peptide of human DYNC1LI2
Target Name	DYNC1LI2
Other Names	LIC2; DNCLI2
Accession No.	Swiss-Prot#:O43237 NCBI Gene ID:1783Gene Accssion:NP_006132
Calculated MW	54 kDa
Concentration	0.9mg/ml
Formulation	Rabbit IgG in pH7.4 PBS, 0.05% NaN <sub>3</sub> , 40% Glycerol.
Storage	Store at -20C

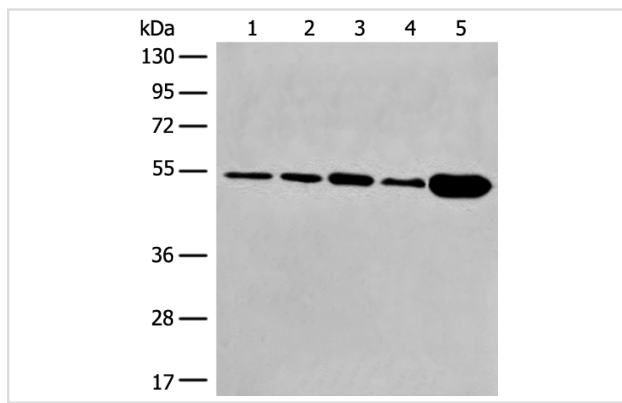
## Application Details

Western blotting:1:200-1000Immunofluorescence:1: 20-100

## Images



The image is immunohistochemistry of paraffin-embedded Human liver cancer tissue using 47087(DYNC1LI2 Antibody) at dilution 1/25. (Original magnification: ?00)



Gel: 8%SDS-PAGE

Lysate: 40 µg, Lane 1-5: Hela and PC-3 cell, Mouse brain tissue, SKOV3 cell, Human fetal brain tissue lysates

Primary antibody: DYNC1LI2 Antibody at dilution 1/400

Secondary antibody: Goat anti rabbit IgG at 1/8000 dilution

Exposure time: 3 minutes

## Background

Acts as one of several non-catalytic accessory components of the cytoplasmic dynein 1 complex that are thought to be involved in linking dynein to cargos and to adapter proteins that regulate dynein function. Cytoplasmic dynein 1 acts as a motor for the intracellular retrograde motility of vesicles and organelles along microtubules. May play a role in binding dynein to membranous organelles or chromosomes.

Note: This product is for in vitro research use only and is not intended for use in humans or animals.