

## LILRA2 Antibody

Catalog No: #47148

Orders: [order@signalwayantibody.com](mailto:order@signalwayantibody.com)Support: [tech@signalwayantibody.com](mailto:tech@signalwayantibody.com)

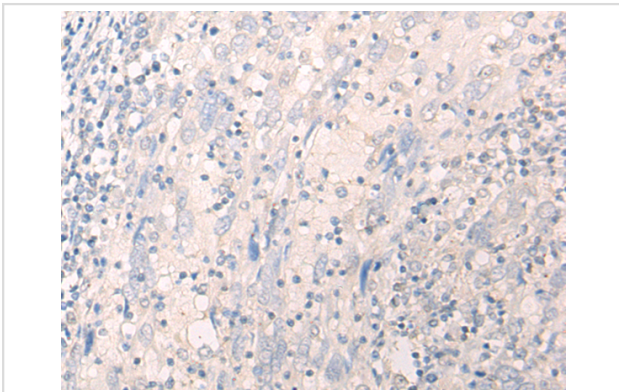
## Description

Product Name	LILRA2 Antibody
Host Species	Rabbit
Clonality	Polyclonal
Purification	Antigen affinity purification
Applications	IHC
Species Reactivity	Hu
Specificity	The antibody detects endogenous levels of total LILRA2 protein.
Immunogen Type	protein
Immunogen Description	Fusion protein of human LILRA2
Target Name	LILRA2
Other Names	ILT1; LIR7; CD85H; LIR-7
Accession No.	Swiss-Prot#:Q8N149NCBI Gene ID:11027Gene Accssion:BC017412
Concentration	1.3mg/ml
Formulation	Rabbit IgG in pH7.4 PBS, 0.05% NaN <sub>3</sub> , 40% Glycerol.
Storage	Store at -20C

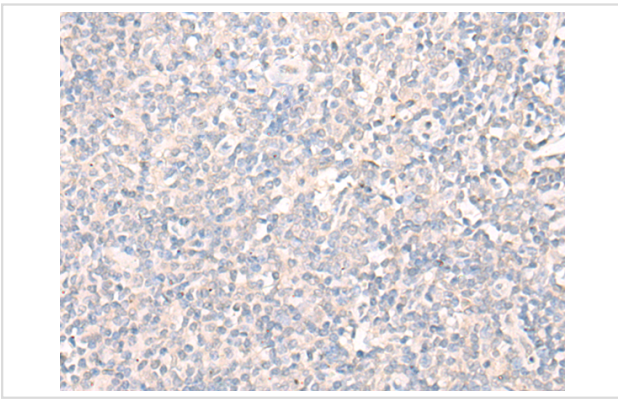
## Application Details

Immunofluorescence: 1: 20-100

## Images



The image is immunohistochemistry of paraffin-embedded Human cervical cancer tissue using 47148(LILRA2 Antibody) at dilution 1/40. (Original magnification: ?00)



The image is immunohistochemistry of paraffin-embedded Human tonsil tissue using 47148(LILRA2 Antibody) at dilution 1/40. (Original magnification: ?00)

## Background

This gene encodes a member of a family of immunoreceptors that are expressed predominantly on monocytes and B cells, and at lower levels on dendritic cells and natural killer cells. The encoded protein is an activating receptor that inhibits dendritic cell differentiation and antigen presentation and suppresses innate immune response. Alternatively spliced transcript variants encoding different isoforms have been found. This gene is located in a cluster of related genes on chromosome 19 and there is a pseudogene for this gene on chromosome 3.

Note: This product is for in vitro research use only and is not intended for use in humans or animals.