

WNT2B Antibody

Catalog No: #40309



Package Size: #40309-1 50ul #40309-2 100ul

Orders: order@signalwayantibody.comSupport: tech@signalwayantibody.com

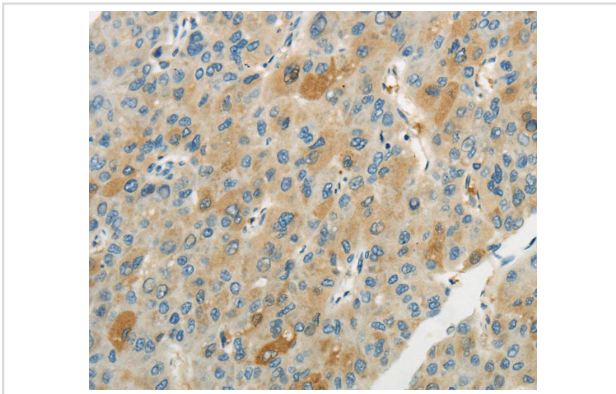
Description

Product Name	WNT2B Antibody
Host Species	Rabbit
Clonality	Polyclonal
Purification	Antigen affinity purification.
Applications	IHC
Species Reactivity	Hu
Specificity	The antibody detects endogenous levels of total WNT2B protein.
Immunogen Type	Peptide
Immunogen Description	Synthetic peptide of human wingless-type MMTV integration site family, member 2B
Target Name	WNT2B
Other Names	WNT13
Accession No.	Swiss-Prot:Q93097 Gene Accssion:NP_004176
Concentration	0.8mg/ml
Formulation	Rabbit IgG in pH7.4 PBS, 0.05% NaN ₃ , 40% Glycerol.
Storage	Store at -20°C

Application Details

Immunohistochemistry:1:10-1:50

Images



Immunohistochemical analysis of paraffin-embedded Human liver cancer tissue using #40309 at dilution 1/20.

Background

This gene encodes a member of the wingless-type MMTV integration site (WNT) family of highly conserved, secreted signaling factors. WNT family members function in a variety of developmental processes including regulation of cell growth and differentiation and are characterized by a WNT-core domain. This gene may play a role in human development as well as carcinogenesis. Alternative splicing results in multiple transcript variants.?

Note: This product is for in vitro research use only and is not intended for use in humans or animals.