

## VPS18 Antibody

Catalog No: #47235

Orders: [order@signalwayantibody.com](mailto:order@signalwayantibody.com)Support: [tech@signalwayantibody.com](mailto:tech@signalwayantibody.com)

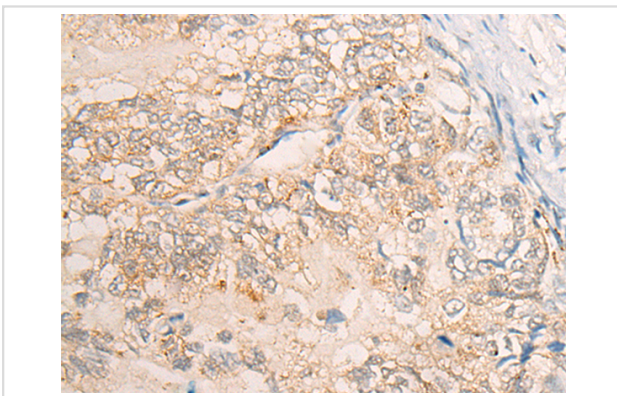
## Description

Product Name	VPS18 Antibody
Host Species	Rabbit
Clonality	Polyclonal
Purification	Antigen affinity purification
Applications	WB, IHC
Species Reactivity	Hu
Specificity	The antibody detects endogenous levels of total VPS18 protein.
Immunogen Type	protein
Immunogen Description	Fusion protein of human VPS18
Target Name	VPS18
Other Names	PEP3
Accession No.	Swiss-Prot#:Q9P253NCBI Gene ID:57617Gene Accssion:BC001513
Calculated MW	110 kDa
Concentration	0.2mg/ml
Formulation	Rabbit IgG in pH7.4 PBS, 0.05% NaN <sub>3</sub> , 40% Glycerol.
Storage	Store at -20C

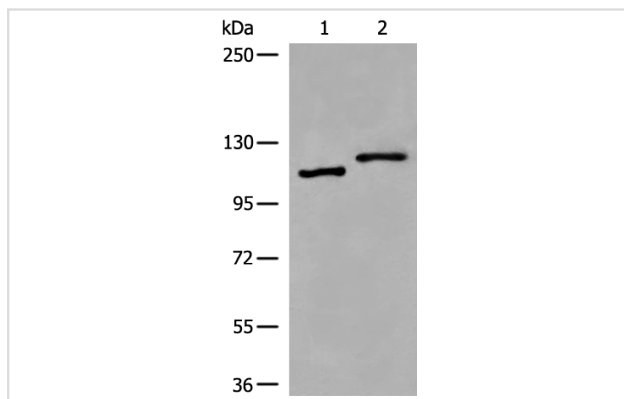
## Application Details

Western blotting:1:200-1000Immunofluorescence:1: 25-100

## Images



The image is immunohistochemistry of paraffin-embedded Human gastric cancer tissue using 47235(VPS18 Antibody) at dilution 1/35. (Original magnification: 200)



Gel: 6%SDS-PAGE  
Lysate: 40 µg, Lane 1-2: HeLa and K562 cell lysates  
Primary antibody: VPS18 Antibody at dilution 1/400  
Secondary antibody: Goat anti rabbit IgG at 1/8000 dilution  
Exposure time: 50 seconds

## Background

Vesicle mediated protein sorting plays an important role in segregation of intracellular molecules into distinct organelles. Genetic studies in yeast have identified more than 40 vacuolar protein sorting (VPS) genes involved in vesicle transport to vacuoles. This gene encodes the human homolog of yeast class C Vps18 protein. The mammalian class C Vps proteins are predominantly associated with late endosomes/lysosomes, and like their yeast counterparts, may mediate vesicle trafficking steps in the endosome/lysosome pathway.

Note: This product is for in vitro research use only and is not intended for use in humans or animals.