

Vps20-associated 1 homolog antibody

Catalog No: #22529

Orders: order@signalwayantibody.com

Support: tech@signalwayantibody.com

Description

Product Name	Vps20-associated 1 homolog antibody
Host Species	Rabbit
Clonality	Polyclonal
Purification	Purified by antigen-affinity chromatography.
Applications	WB IHC IF
Species Reactivity	Hu
Immunogen Type	Recombinant protein
Immunogen Description	Recombinant protein fragment contain a sequence corresponding to a region within amino acids 1 and 246 of Human VTA1
Target Name	Vps20-associated 1 homolog
Accession No.	NCBI Gene ID: 51534NCBI mRNA#: NM_016485NCBI Protein#: NP_057569
Concentration	0.7mg/ml
Formulation	Supplied in 0.1M Tris-buffered saline with 10% Glycerol (pH7.0). 0.01% Thimerosal was added as a preservative.
Storage	Store at -20°C for long term preservation (recommended). Store at 4°C for short term use.

Application Details

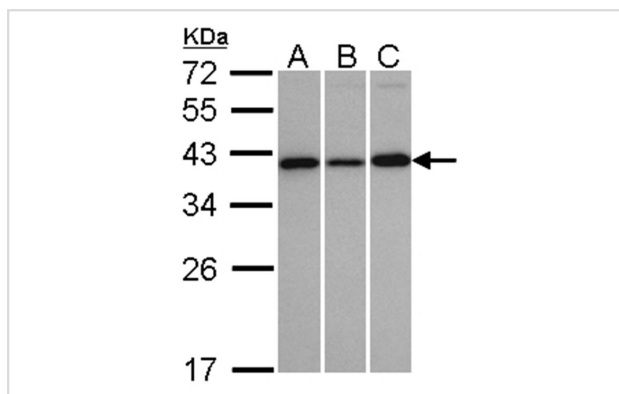
Predicted MW: 34kd

Western blotting: 1:500-1:3000

Immunohistochemistry: 1:50-1:500

Immunofluorescence: 1:100-1:200

Images



Sample(30 ug whole cell lysate)

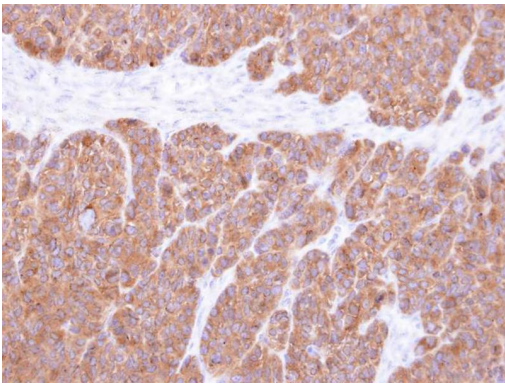
A: H1299

B: HeLa S3

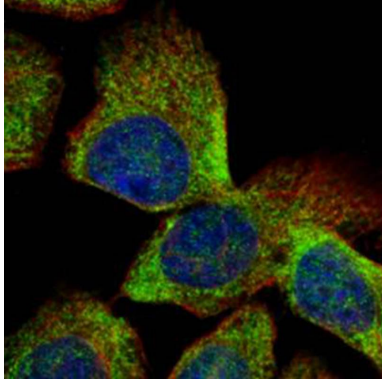
C: MOLT4

12% SDS PAGE

Primary antibody diluted at 1: 1000



Immunohistochemical analysis of paraffin-embedded SW480 xenograft, using VTA1 antibody at 1: 500 dilution.



Confocal immunofluorescence analysis (Olympus FV10i) of methanol-fixed A431, using VTA1 antibody (Green) at 1: 500 dilution and alpha-tubulin antibody (Red) at 1: 500.

Background

C6ORF55 encodes a protein involved in trafficking of the multivesicular body, an endosomal compartment involved in sorting membrane proteins for degradation in lysosomes (Ward et al., 2005 [PubMed 15644320]).[supplied by OMIM]

Note: This product is for in vitro research use only and is not intended for use in humans or animals.