

## Histone H1 (Phospho-Thr17) Polyclonal Antibody

Catalog No: #12177



Package Size: #12177-1 50ul #12177-2 100ul

Orders: order@signalwayantibody.com

Support: tech@signalwayantibody.com

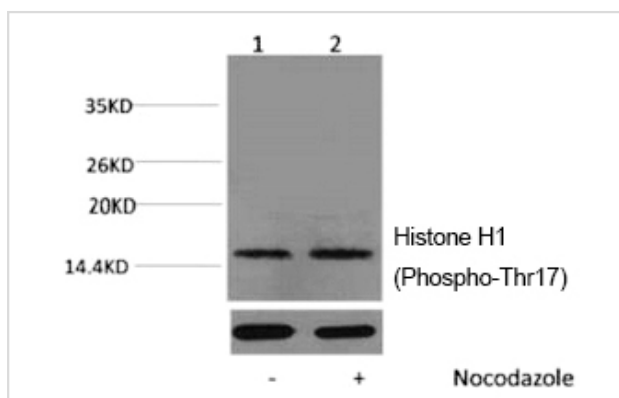
## Description

Product Name	Histone H1 (Phospho-Thr17) Polyclonal Antibody
Host Species	Rabbit
Clonality	Polyclonal
Purification	The antibody was affinity-purified from antiserum by affinity-chromatography
Applications	WB
Species Reactivity	Hu Ms Rt
Specificity	The antibody detects endogenous Histone H1 (Phospho Thr17) protein.
Immunogen Type	peptide
Immunogen Description	Phospho peptide at Th17 of Histone H3
Target Name	Histone H1
Modification	Phospho
Other Names	HIST1H1A; H1F1; Histone H1.1; Histone H1a; HIST1H1C; H1F2; Histone H1.2; Histone H1c; Histone H1d; Histone H1s-1; HIST1H1D; H1F3; Histone H1.3; Histone H1c; Histone H1s-2; HIST1H1E; H1F4; Histone H1.4; Histone H1b; Histone H1s-4
Accession No.	Swiss-Prot: Q02539/P16403/P16402/P10412NCBI Gene ID: 3024/3006/3007/3008
SDS-PAGE MW	17-25kd
Concentration	1mg/ml
Formulation	Liquid in PBS containing 50% glycerol, 0.5% BSA and 0.02% sodium azide.
Storage	Store at -20°C/1 year

## Application Details

Western blotting: 1:1000-2000

## Images



Western blot analysis of extracts from HeLa cells, untreated (-) or treated, 1:5000.

---

Note: This product is for in vitro research use only and is not intended for use in humans or animals.