

# AP-1 (Phospho-Thr239) Polyclonal Antibody

Catalog No: #12182

Package Size: #12182-1 50ul #12182-2 100ul

Orders: [order@signalwayantibody.com](mailto:order@signalwayantibody.com)

Support: [tech@signalwayantibody.com](mailto:tech@signalwayantibody.com)

## Description

Product Name	AP-1 (Phospho-Thr239) Polyclonal Antibody
Host Species	Rabbit
Clonality	Polyclonal
Purification	The antibody was affinity-purified from rabbit antiserum by affinity-chromatography using epitope-specific immunogen.
Applications	WB IHC IP ELISA
Species Reactivity	Hu Ms Rt
Specificity	Phospho-AP-1 (T239) Polyclonal Antibody detects endogenous levels of AP-1 protein only when phosphorylated at T239.
Immunogen Type	peptide
Immunogen Description	Synthesized peptide derived from human AP-1 around the phosphorylation site of T239.
Target Name	AP-1
Modification	Phospho
Other Names	JUN; Transcription factor AP-1; Activator protein 1; AP1; Proto-oncogene c-Jun; V-jun avian sarcoma virus 17 oncogene homolog; p39
Accession No.	Swiss-Prot: P05412NCBI Gene ID: 3725
Target Species	human
Calculated MW	35kd
Concentration	1mg/ml
Formulation	Liquid in PBS containing 50% glycerol, 0.5% BSA and 0.02% sodium azide.
Storage	Store at -20°C/1 year

## Application Details

Western blotting: 1/500 - 1/2000

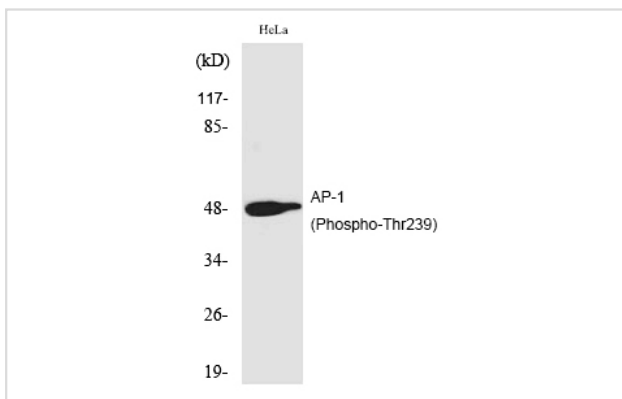
Immunohistochemistry: 1/100 - 1/300

Immunoprecipitation: 2-5 ug/mg lysate

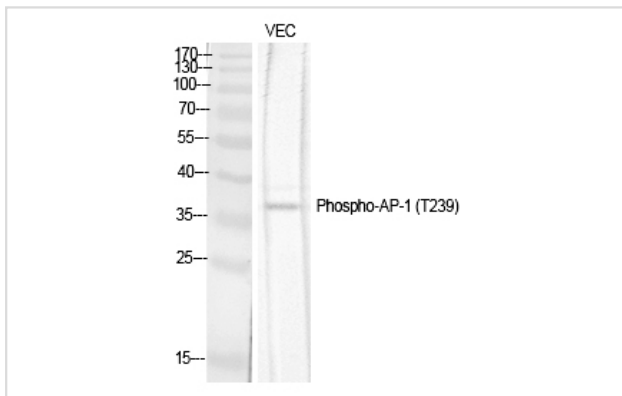
ELISA: 1/20000

Not yet tested in other applications

## Images



Western Blot analysis of HeLa cells using Phospho-AP-1 (T239) Polyclonal Antibody



Western Blot analysis of VEC cells using Phospho-AP-1 (T239) Polyclonal Antibody

---

Note: This product is for in vitro research use only and is not intended for use in humans or animals.