

C/EBP  $\beta$  (Phospho-Thr235) Polyclonal Antibody

Catalog No: #12185



Package Size: #12185-1 50ul #12185-2 100ul

Orders: [order@signalwayantibody.com](mailto:order@signalwayantibody.com)Support: [tech@signalwayantibody.com](mailto:tech@signalwayantibody.com)

## Description

Product Name	C/EBP $\beta$ (Phospho-Thr235) Polyclonal Antibody
Host Species	Rabbit
Clonality	Polyclonal
Purification	The antibody was affinity-purified from rabbit antiserum by affinity-chromatography using epitope-specific immunogen.
Applications	WB IHC IF ELISA
Species Reactivity	Hu Ms Rt
Specificity	Phospho-C/EBP $\beta$ (T235) Polyclonal Antibody detects endogenous levels of C/EBP $\beta$ protein only when phosphorylated at T235.
Immunogen Type	peptide
Immunogen Description	Synthesized peptide derived from human C/EBP $\beta$ around the phosphorylation site of T235.
Target Name	C/EBP $\beta$
Modification	Phospho
Other Names	CEBPB; LAP; TCF5; PP9092; CCAAT/enhancer-binding protein beta; C/EBP beta; Liver activator protein; Nuclear factor NF-IL6; Transcription factor 5; TCF-5
Accession No.	Swiss-Prot: P17676NCBI Gene ID: 1051
Target Species	human
SDS-PAGE MW	36kd
Concentration	1mg/ml
Formulation	Liquid in PBS containing 50% glycerol, 0.5% BSA and 0.02% sodium azide.
Storage	Store at -20°C/1 year

## Application Details

Western blotting: 1/500 - 1/2000

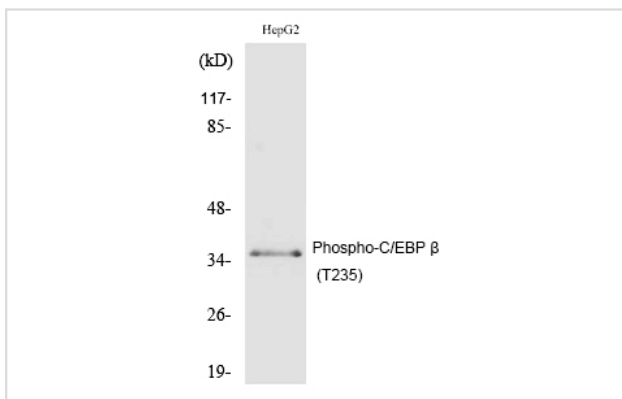
Immunohistochemistry: 1/100 - 1/300

Immunofluorescence: 1/200 - 1/1000

ELISA: 1/10000

Not yet tested in other applications

## Images



Western Blot analysis of HepG2 cells using Phospho-C/EBP  $\beta$  (T235) Polyclonal Antibody

---

Note: This product is for in vitro research use only and is not intended for use in humans or animals.