

Caspase-6 (Phospho-Ser257) Polyclonal Antibody

Catalog No: #12187



Package Size: #12187-1 50ul #12187-2 100ul

Orders: order@signalwayantibody.comSupport: tech@signalwayantibody.com

Description

Product Name	Caspase-6 (Phospho-Ser257) Polyclonal Antibody
Host Species	Rabbit
Clonality	Polyclonal
Purification	The antibody was affinity-purified from rabbit antiserum by affinity-chromatography using epitope-specific immunogen.
Applications	WB IHC IF ELISA
Species Reactivity	Hu Ms Rt
Specificity	Phospho-Caspase-6 (S257) Polyclonal Antibody detects endogenous levels of Caspase-6 protein only when phosphorylated at S257.
Immunogen Type	peptide
Immunogen Description	Synthesized peptide derived from human Caspase-6 around the phosphorylation site of S257.
Target Name	Caspase-6
Modification	Phospho
Other Names	CASP6; MCH2; Caspase-6; CASP-6; Apoptotic protease Mch-2
Accession No.	Swiss-Prot: P55212NCBI Gene ID: 839
Target Species	human
SDS-PAGE MW	33kd
Concentration	1mg/ml
Formulation	Liquid in PBS containing 50% glycerol, 0.5% BSA and 0.02% sodium azide.
Storage	Store at -20°C/1 year

Application Details

Western blotting: 1/500 - 1/2000

Immunohistochemistry: 1/100 - 1/300

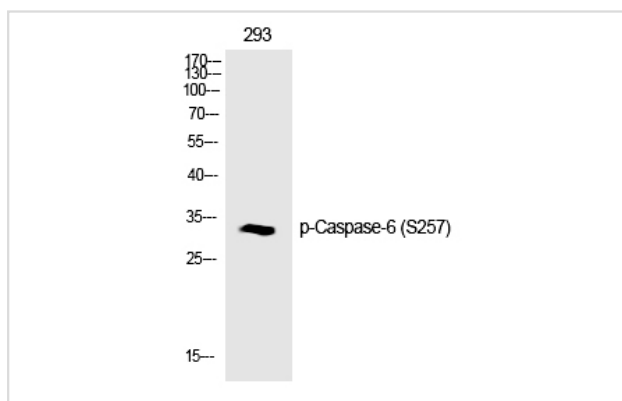
Immunofluorescence: 1/200 - 1/1000

ELISA: 1/20000

Not yet tested in other applications

Images

Western Blot analysis of Jurkat cells using
Phospho-Caspase-6 (S257) Polyclonal Antibody



Note: This product is for in vitro research use only and is not intended for use in humans or animals.