

## Cdc25A (Phospho-Ser75) Polyclonal Antibody

Catalog No: #12188



Package Size: #12188-1 50ul #12188-2 100ul

Orders: [order@signalwayantibody.com](mailto:order@signalwayantibody.com)Support: [tech@signalwayantibody.com](mailto:tech@signalwayantibody.com)

## Description

|                       |   |
|-----------------------|---|
| Product Name          | Cdc25A (Phospho-Ser75) Polyclonal Antibody  |
| Host Species          | Rabbit  |
| Clonality             | Polyclonal  |
| Purification          | The antibody was affinity-purified from rabbit antiserum by affinity-chromatography using epitope-specific immunogen. |
| Applications          | WB IHC ELISA  |
| Species Reactivity    | Hu Ms Rt  |
| Specificity           | Phospho-Cdc25A (S75) Polyclonal Antibody detects endogenous levels of Cdc25A protein only when phosphorylated at S75. |
| Immunogen Type        | peptide   |
| Immunogen Description | Synthesized peptide derived from human Cdc25A around the phosphorylation site of S75.                                 |
| Target Name           | Cdc25A  |
| Modification          | Phospho   |
| Other Names           | CDC25A; M-phase inducer phosphatase 1; Dual specificity phosphatase Cdc25A  |
| Accession No.         | Swiss-Prot: P30304NCBI Gene ID: 993   |
| Target Species        | human   |
| SDS-PAGE MW           | 59kd  |
| Concentration         | 1mg/ml  |
| Formulation           | Liquid in PBS containing 50% glycerol, 0.5% BSA and 0.02% sodium azide.   |
| Storage               | Store at -20°C/1 year   |

## Application Details

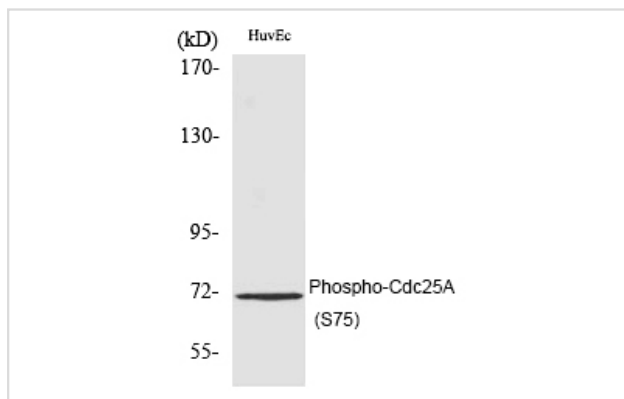
Western blotting: 1/500 - 1/2000

Immunohistochemistry: 1/100 - 1/300

ELISA: 1/5000

Not yet tested in other applications

## Images



Western Blot analysis of HuvEc cells using Phospho-Cdc25A (S75) Polyclonal Antibody

---

Note: This product is for in vitro research use only and is not intended for use in humans or animals.