

## Chk1 (Phospho-Ser317) Polyclonal Antibody

Catalog No: #12190



Package Size: #12190-1 50ul #12190-2 100ul

Orders: [order@signalwayantibody.com](mailto:order@signalwayantibody.com)Support: [tech@signalwayantibody.com](mailto:tech@signalwayantibody.com)

## Description

Product Name	Chk1 (Phospho-Ser317) Polyclonal Antibody
Host Species	Rabbit
Clonality	Polyclonal
Purification	The antibody was affinity-purified from rabbit antiserum by affinity-chromatography using epitope-specific immunogen.
Applications	WB IHC ELISA
Species Reactivity	Hu Ms Rt
Specificity	Phospho-Chk1 (S317) Polyclonal Antibody detects endogenous levels of Chk1 protein only when phosphorylated at S317.
Immunogen Type	peptide
Immunogen Description	Synthesized peptide derived from human Chk1 around the phosphorylation site of S317.
Target Name	Chk1
Modification	Phospho
Other Names	CHEK1; CHK1; Serine/threonine-protein kinase Chk1; CHK1 checkpoint homolog; Cell cycle checkpoint kinase; Checkpoint kinase-1
Accession No.	Swiss-Prot: O14757NCBI Gene ID: 1111
Target Species	human
SDS-PAGE MW	54kd
Concentration	1mg/ml
Formulation	Liquid in PBS containing 50% glycerol, 0.5% BSA and 0.02% sodium azide.
Storage	Store at -20°C/1 year

## Application Details

Western blotting: 1/500 - 1/2000

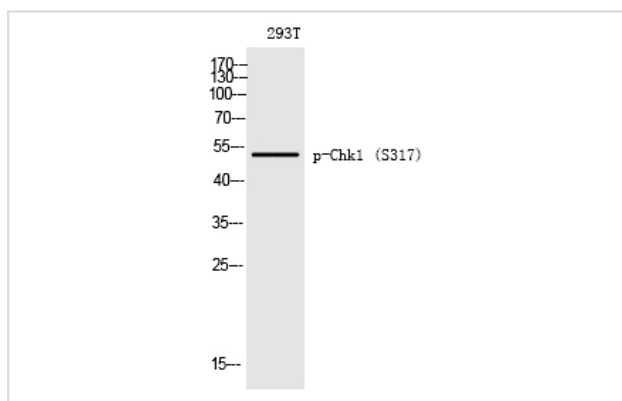
Immunohistochemistry: 1/100 - 1/300

ELISA: 1/5000

Not yet tested in other applications

## Images

Western Blot analysis of 293T cells using Phospho-Chk1 (S317) Polyclonal Antibody



---

Note: This product is for in vitro research use only and is not intended for use in humans or animals.