

## Cyclin B1 (Phospho-Ser126) Polyclonal Antibody

Catalog No: #12193



Package Size: #12193-1 50ul #12193-2 100ul

Orders: [order@signalwayantibody.com](mailto:order@signalwayantibody.com)Support: [tech@signalwayantibody.com](mailto:tech@signalwayantibody.com)

## Description

Product Name	Cyclin B1 (Phospho-Ser126) Polyclonal Antibody
Host Species	Rabbit
Clonality	Polyclonal
Purification	The antibody was affinity-purified from rabbit antiserum by affinity-chromatography using epitope-specific immunogen.
Applications	WB IHC ELISA
Species Reactivity	Hu Ms Rt
Specificity	Phospho-Cyclin B1 (S126) Polyclonal Antibody detects endogenous levels of Cyclin B1 protein only when phosphorylated at S126.
Immunogen Type	peptide
Immunogen Description	Synthesized peptide derived from human Cyclin B1 around the phosphorylation site of S126.
Target Name	Cyclin B1
Modification	Phospho
Other Names	CCNB1; CCNB; G2/mitotic-specific cyclin-B1
Accession No.	Swiss-Prot: P14635NCBI Gene ID: 891
Target Species	human
SDS-PAGE MW	60kd
Concentration	1mg/ml
Formulation	Liquid in PBS containing 50% glycerol, 0.5% BSA and 0.02% sodium azide.
Storage	Store at -20°C/1 year

## Application Details

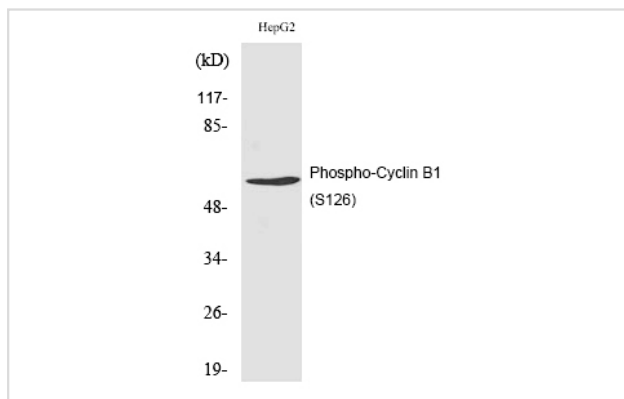
Western blotting: 1/500 - 1/2000

Immunohistochemistry: 1/100 - 1/300

ELISA: 1/5000

Not yet tested in other applications

## Images



Western Blot analysis of HepG2 cells using Phospho-Cyclin B1 (S126) Polyclonal Antibody

## Published Papers

el at., Sinularin induces oxidative stress  $\zeta$ • mediated G2/M arrest and apoptosis in oral cancer cells. In Environ Toxicol on 2017 Sep by Yung-Ting Chang, Chang-Yi Wu, et al.. PMID:28548367, (2017)

[PMID:28548367](#)

Note: This product is for in vitro research use only and is not intended for use in humans or animals.