

## Flk-1 (Phospho-Tyr1214) Polyclonal Antibody

Catalog No: #12197



Package Size: #12197-1 50ul #12197-2 100ul

Orders: [order@signalwayantibody.com](mailto:order@signalwayantibody.com)Support: [tech@signalwayantibody.com](mailto:tech@signalwayantibody.com)

## Description

Product Name	Flk-1 (Phospho-Tyr1214) Polyclonal Antibody
Host Species	Rabbit
Clonality	Polyclonal
Purification	The antibody was affinity-purified from rabbit antiserum by affinity-chromatography using epitope-specific immunogen.
Applications	WB IHC IF ELISA
Species Reactivity	Hu Ms Rt
Specificity	Phospho-Flk-1 (Y1214) Polyclonal Antibody detects endogenous levels of Flk-1 protein only when phosphorylated at Y1214.
Immunogen Type	peptide
Immunogen Description	Synthesized peptide derived from human Flk-1 around the phosphorylation site of Y1214.
Target Name	Flk-1
Modification	Phospho
Other Names	KDR; FLK1; VEGFR2; Vascular endothelial growth factor receptor 2; VEGFR-2; Fetal liver kinase 1; FLK-1; Kinase insert domain receptor; KDR; Protein-tyrosine kinase receptor flk-1; CD antigen CD309
Accession No.	Swiss-Prot: P35968NCBI Gene ID: 3791
Target Species	human
SDS-PAGE MW	152kd
Concentration	1mg/ml
Formulation	Liquid in PBS containing 50% glycerol, 0.5% BSA and 0.02% sodium azide.
Storage	Store at -20°C/1 year

## Application Details

Western blotting: 1/500 - 1/2000

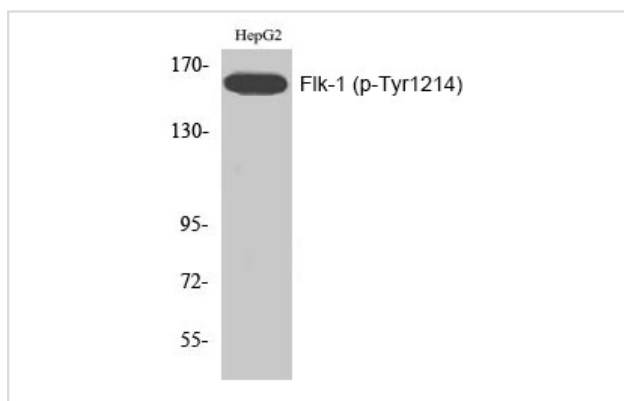
Immunohistochemistry: 1/100 - 1/300

Immunofluorescence: 1/200 - 1/1000

ELISA: 1/10000

Not yet tested in other applications

## Images



Western Blot analysis of HepG2 cells using Phospho-Fik-1 (Y1214) Polyclonal Antibody

## Published Papers

el at., Efficacy of Bevacizumab Therapy in Recurrent Malignant Gliomas in Relation to the Prior Recurrence Pattern or Tumor Location. In J Clin Neurosci on 2017 Jun by Masahide Matsuda , Eiichi Ishikawa, et al.. PMID: 28246006 , (2017)

[PMID:28246006](https://pubmed.ncbi.nlm.nih.gov/28246006/)

Note: This product is for in vitro research use only and is not intended for use in humans or animals.