

## Hrs (Phospho-Tyr216) Polyclonal Antibody

Catalog No: #12202



Package Size: #12202-1 50ul #12202-2 100ul

Orders: order@signalwayantibody.com

Support: tech@signalwayantibody.com

## Description

Product Name	Hrs (Phospho-Tyr216) Polyclonal Antibody
Host Species	Rabbit
Clonality	Polyclonal
Purification	The antibody was affinity-purified from rabbit antiserum by affinity-chromatography using epitope-specific immunogen.
Applications	WB ELISA
Species Reactivity	Hu Ms Rt
Specificity	Phospho-Hrs (Y216) Polyclonal Antibody detects endogenous levels of Hrs protein only when phosphorylated at Y216.
Immunogen Type	peptide
Immunogen Description	Synthesized peptide derived from human Hrs around the phosphorylation site of Y216.
Target Name	Hrs
Modification	Phospho
Other Names	HGS; HRS; Hepatocyte growth factor-regulated tyrosine kinase substrate; Hrs; Protein pp110
Accession No.	Swiss-Prot: O14964NCBI Gene ID: 9146
Target Species	human
SDS-PAGE MW	115kd
Concentration	1mg/ml
Formulation	Liquid in PBS containing 50% glycerol, 0.5% BSA and 0.02% sodium azide.
Storage	Store at -20°C/1 year

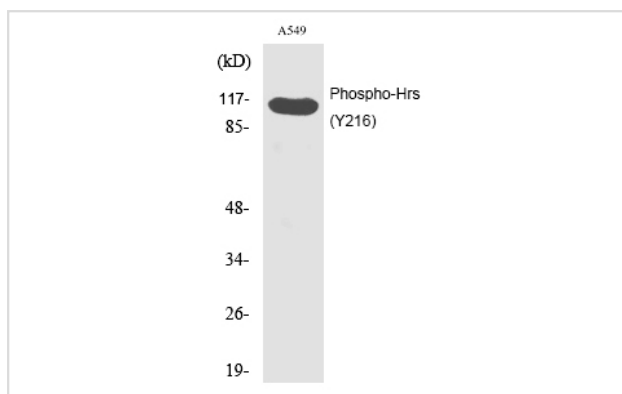
## Application Details

Western blotting: 1/500 - 1/2000

ELISA: 1/10000

Not yet tested in other applications

## Images



Western Blot analysis of A549 cells using Phospho-Hrs (Y216) Polyclonal Antibody

---

Note: This product is for in vitro research use only and is not intended for use in humans or animals.