

Neu (Phospho-Tyr1248) Polyclonal Antibody

Catalog No: #12210



Package Size: #12210-1 50ul #12210-2 100ul

Orders: order@signalwayantibody.comSupport: tech@signalwayantibody.com

Description

| | |
|-----------------------|---|
| Product Name | Neu (Phospho-Tyr1248) Polyclonal Antibody |
| Host Species | Rabbit |
| Clonality | Polyclonal |
| Purification | The antibody was affinity-purified from rabbit antiserum by affinity-chromatography using epitope-specific immunogen. |
| Applications | WB IHC ELISA |
| Species Reactivity | Hu Ms Rt |
| Specificity | Phospho-Neu (Y1248) Polyclonal Antibody detects endogenous levels of Neu protein only when phosphorylated at Y1248. |
| Immunogen Type | peptide |
| Immunogen Description | Synthesized peptide derived from human Neu around the phosphorylation site of Y1248. |
| Target Name | Neu |
| Modification | Phospho |
| Other Names | ERBB2; HER2; MLN19; NEU; NGL; Receptor tyrosine-protein kinase erbB-2; Metastatic lymph node gene 19 protein; MLN 19; Proto-oncogene Neu; Proto-oncogene c-ErbB-2; Tyrosine kinase-type cell surface receptor HER2; p185erbB2; CD antigen CD340 |
| Accession No. | Swiss-Prot: P04626NCBI Gene ID: 2064 |
| Target Species | human |
| SDS-PAGE MW | 150kd |
| Concentration | 1mg/ml |
| Formulation | Liquid in PBS containing 50% glycerol, 0.5% BSA and 0.02% sodium azide. |
| Storage | Store at -20°C/1 year |

Application Details

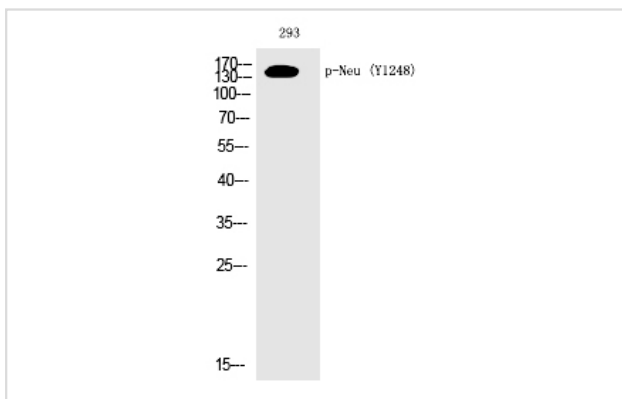
Western blotting: 1/500 - 1/2000

Immunohistochemistry: 1/100 - 1/300

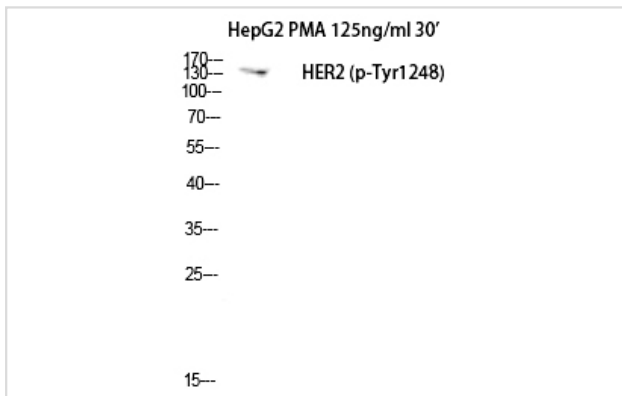
ELISA: 1/20000

Not yet tested in other applications

Images



Western Blot analysis of 293 cells using Phospho-Neu (Y1248) Polyclonal Antibody



Western Blot analysis of HepG2+PMA cells using Phospho-Neu (Y1248) Polyclonal Antibody

Note: This product is for in vitro research use only and is not intended for use in humans or animals.