

## Op18 (Phospho-Ser16) Polyclonal Antibody

Catalog No: #12212



Package Size: #12212-1 50ul #12212-2 100ul

Orders: [order@signalwayantibody.com](mailto:order@signalwayantibody.com)Support: [tech@signalwayantibody.com](mailto:tech@signalwayantibody.com)

## Description

|                       |   |
|-----------------------|---|
| Product Name          | Op18 (Phospho-Ser16) Polyclonal Antibody  |
| Host Species          | Rabbit  |
| Clonality             | Polyclonal  |
| Purification          | The antibody was affinity-purified from rabbit antiserum by affinity-chromatography using epitope-specific immunogen.   |
| Applications          | WB IHC IF ELISA   |
| Species Reactivity    | Hu Ms Rt  |
| Specificity           | Phospho-Op18 (S16) Polyclonal Antibody detects endogenous levels of Op18 protein only when phosphorylated at S16.   |
| Immunogen Type        | peptide   |
| Immunogen Description | Synthesized peptide derived from human Op18 around the phosphorylation site of S16.   |
| Target Name           | Op18  |
| Modification          | Phospho   |
| Other Names           | STMN1; C1orf215; LAP18; OP18; Stathmin; Leukemia-associated phosphoprotein p18; Metablastin; Oncoprotein 18; Op18; Phosphoprotein p19; pp19; ProsoLin; Protein Pr22; pp17 |
| Accession No.         | Swiss-Prot: P16949NCBI Gene ID: 3925  |
| Target Species        | human   |
| SDS-PAGE MW           | 17kd  |
| Concentration         | 1mg/ml  |
| Formulation           | Liquid in PBS containing 50% glycerol, 0.5% BSA and 0.02% sodium azide.   |
| Storage               | Store at -20°C/1 year   |

## Application Details

Western blotting: 1/500 - 1/2000

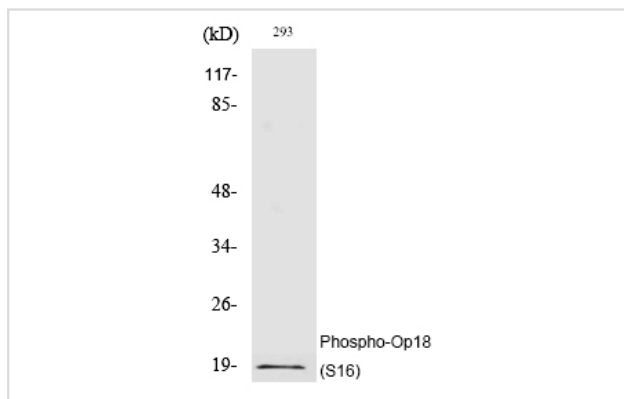
Immunohistochemistry: 1/100 - 1/300

Immunofluorescence: 1/200 - 1/1000

ELISA: 1/10000

Not yet tested in other applications

## Images



Western Blot analysis of 293 cells using Phospho-Op18 (S16) Polyclonal Antibody

---

Note: This product is for in vitro research use only and is not intended for use in humans or animals.