

## Shb (Phospho-Tyr246) Polyclonal Antibody

Catalog No: #12221



Package Size: #12221-1 50ul #12221-2 100ul

Orders: order@signalwayantibody.com

Support: tech@signalwayantibody.com

## Description

Product Name	Shb (Phospho-Tyr246) Polyclonal Antibody
Host Species	Rabbit
Clonality	Polyclonal
Purification	The antibody was affinity-purified from rabbit antiserum by affinity-chromatography using epitope-specific immunogen.
Applications	WB ELISA
Species Reactivity	Hu Ms
Specificity	Phospho-Shb (Y246) Polyclonal Antibody detects endogenous levels of Shb protein only when phosphorylated at Y246.
Immunogen Type	peptide
Immunogen Description	Synthesized peptide derived from human Shb around the phosphorylation site of Y246.
Target Name	Shb
Modification	Phospho
Other Names	SHB; SH2 domain-containing adapter protein B
Accession No.	Swiss-Prot: Q15464NCBI Gene ID: 6461
Target Species	human
SDS-PAGE MW	55kd
Concentration	1mg/ml
Formulation	Liquid in PBS containing 50% glycerol, 0.5% BSA and 0.02% sodium azide.
Storage	Store at -20°C/1 year

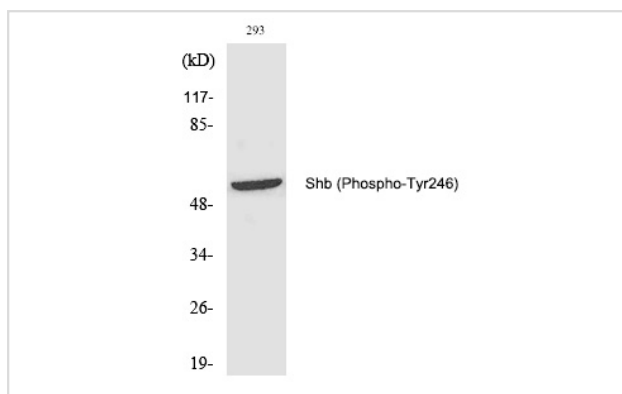
## Application Details

Western blotting: 1/500 - 1/2000

ELISA: 1/10000

Not yet tested in other applications

## Images



Western Blot analysis of 293 cells using Phospho-Shb (Y246) Polyclonal Antibody

---

Note: This product is for in vitro research use only and is not intended for use in humans or animals.