

KOR-1 (Phospho-Ser369) Polyclonal Antibody

Catalog No: #12227



Package Size: #12227-1 50ul #12227-2 100ul

Orders: order@signalwayantibody.comSupport: tech@signalwayantibody.com

Description

Product Name	KOR-1 (Phospho-Ser369) Polyclonal Antibody
Host Species	Rabbit
Clonality	Polyclonal
Purification	The antibody was affinity-purified from rabbit antiserum by affinity-chromatography using epitope-specific immunogen.
Applications	WB IHC ELISA
Species Reactivity	Ms Rt
Specificity	Phospho-KOR-1 (S369) Polyclonal Antibody detects endogenous levels of KOR-1 protein only when phosphorylated at S369.
Immunogen Description	Synthesized peptide derived from mouse KOR-1 around the phosphorylation site of S369.
Target Name	KOR-1
Modification	Phospho
Other Names	OPRK1; OPRK; Kappa-type opioid receptor; K-OR-1; KOR-1
Accession No.	Swiss-Prot: P33534 NCBI Gene ID:18387
Target Species	Ms Rt
SDS-PAGE MW	42kd
Concentration	1mg/ml
Formulation	Liquid in PBS containing 50% glycerol, 0.5% BSA and 0.02% sodium azide.
Storage	Store at -20°C/1 year

Application Details

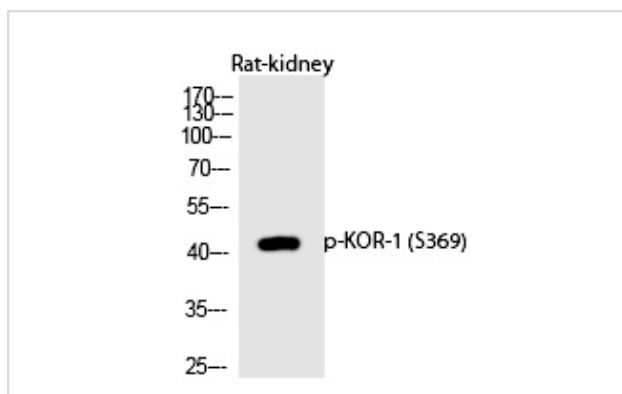
Western blotting: 1/500 - 1/2000

Immunohistochemistry: 1/100 - 1/300

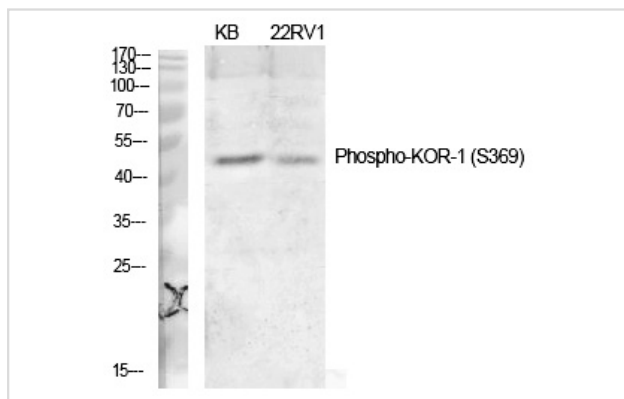
ELISA: 1/10000

Not yet tested in other applications

Images



Western Blot analysis of Rat-kidney cells using Phospho-KOR-1 (S369) Polyclonal Antibody



Western Blot analysis of KB 22RV1 cells using Phospho-KOR-1 (S369) Polyclonal Antibody

Note: This product is for in vitro research use only and is not intended for use in humans or animals.