

## PKD2 (Phospho-Ser876) Polyclonal Antibody

Catalog No: #12236



Package Size: #12236-1 50ul #12236-2 100ul

Orders: [order@signalwayantibody.com](mailto:order@signalwayantibody.com)Support: [tech@signalwayantibody.com](mailto:tech@signalwayantibody.com)

## Description

Product Name	PKD2 (Phospho-Ser876) Polyclonal Antibody
Host Species	Rabbit
Clonality	Polyclonal
Purification	The antibody was affinity-purified from rabbit antiserum by affinity-chromatography using epitope-specific immunogen.
Applications	WB IHC ELISA
Species Reactivity	Hu Ms Rt
Specificity	Phospho-PKD2 (S876) Polyclonal Antibody detects endogenous levels of PKD2 protein only when phosphorylated at S876.
Immunogen Type	peptide
Immunogen Description	Synthesized peptide derived from human PKD2 around the phosphorylation site of S876.
Target Name	PKD2
Modification	Phospho
Other Names	PRKD2; PKD2; HSPC187; Serine/threonine-protein kinase D2; nPKC-D2
Accession No.	Swiss-Prot: Q9BZL6NCBI Gene ID: 25865
Target Species	human
SDS-PAGE MW	96kd
Concentration	1mg/ml
Formulation	Liquid in PBS containing 50% glycerol, 0.5% BSA and 0.02% sodium azide.
Storage	Store at -20°C/1 year

## Application Details

Western blotting: 1/500 - 1/2000

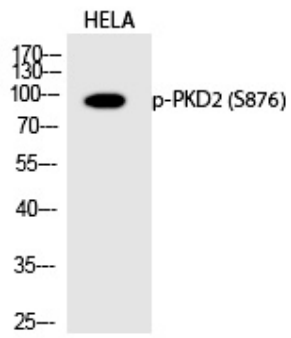
Immunohistochemistry: 1/100 - 1/300

ELISA: 1/40000

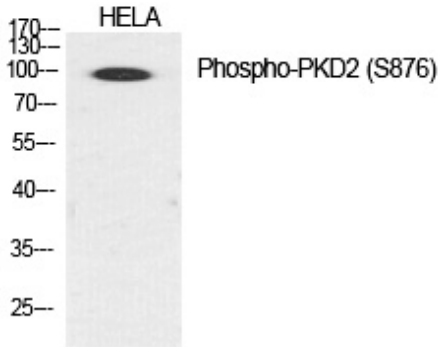
Not yet tested in other applications

## Images

Western Blot analysis of HELA cells using Phospho-PKD2 (S876) Polyclonal Antibody



Western Blot analysis of HELA cells using Phospho-PKD2 (S876) Polyclonal Antibody



---

Note: This product is for in vitro research use only and is not intended for use in humans or animals.