

Caspase-9 (Phospho-Ser196) Polyclonal Antibody

Catalog No: #12238



Package Size: #12238-1 50ul #12238-2 100ul

Orders: order@signalwayantibody.comSupport: tech@signalwayantibody.com

Description

Product Name	Caspase-9 (Phospho-Ser196) Polyclonal Antibody
Host Species	Rabbit
Clonality	Polyclonal
Purification	The antibody was affinity-purified from rabbit antiserum by affinity-chromatography using epitope-specific immunogen.
Applications	WB IHC ELISA
Species Reactivity	Hu
Specificity	Phospho-Caspase-9 (S196) Polyclonal Antibody detects endogenous levels of Caspase-9 protein only when phosphorylated at S196.
Immunogen Type	peptide
Immunogen Description	Synthesized peptide derived from human Caspase-9 around the phosphorylation site of S196.
Target Name	Caspase-9
Modification	Phospho
Other Names	CASP9; MCH6; Caspase-9; CASP-9; Apoptotic protease Mch-6; Apoptotic protease-activating factor 3; APAF-3; ICE-like apoptotic protease 6; ICE-LAP6
Accession No.	Swiss-Prot: P55211NCBI Gene ID: 842
Target Species	human
SDS-PAGE MW	50kd
Concentration	1mg/ml
Formulation	Liquid in PBS containing 50% glycerol, 0.5% BSA and 0.02% sodium azide.
Storage	Store at -20°C/1 year

Application Details

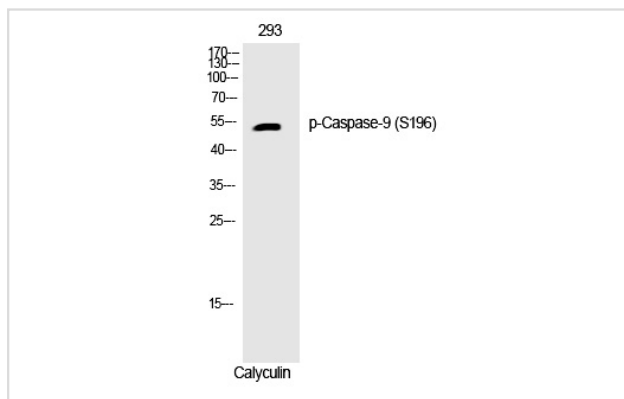
Western blotting: 1/500 - 1/2000

Immunohistochemistry: 1/100 - 1/300

ELISA: 1/20000

Not yet tested in other applications

Images



Western Blot analysis of 293 cells using Phospho-Caspase-9 (S196) Polyclonal Antibody

Note: This product is for in vitro research use only and is not intended for use in humans or animals.