

EGFR (Phospho-Tyr1069) Polyclonal Antibody

Catalog No: #12240



Package Size: #12240-1 50ul #12240-2 100ul

Orders: order@signalwayantibody.comSupport: tech@signalwayantibody.com

Description

Product Name	EGFR (Phospho-Tyr1069) Polyclonal Antibody
Host Species	Rabbit
Clonality	Polyclonal
Purification	The antibody was affinity-purified from rabbit antiserum by affinity-chromatography using epitope-specific immunogen.
Applications	WB ELISA
Species Reactivity	Hu Ms Rt Mk
Specificity	Phospho-EGFR (Y1069) Polyclonal Antibody detects endogenous levels of EGFR protein only when phosphorylated at Y1069.
Immunogen Type	peptide
Immunogen Description	Synthesized peptide derived from human EGFR around the phosphorylation site of Y1069.
Target Name	EGFR
Modification	Phospho
Other Names	EGFR; ERBB; ERBB1; HER1; Epidermal growth factor receptor; Proto-oncogene c-ErbB-1; Receptor tyrosine-protein kinase erbB-1
Accession No.	Swiss-Prot: P00533NCBI Gene ID: 1956
Target Species	human
SDS-PAGE MW	170kd
Concentration	1mg/ml
Formulation	Liquid in PBS containing 50% glycerol, 0.5% BSA and 0.02% sodium azide.
Storage	Store at -20°C/1 year

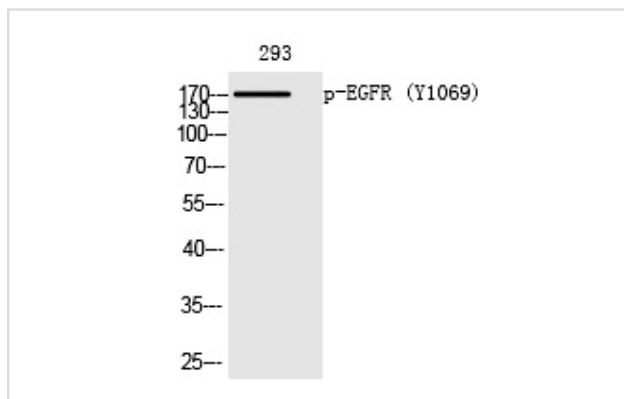
Application Details

Western blotting: 1/500 - 1/2000

ELISA: 1/20000

Not yet tested in other applications

Images



Western Blot analysis of 293 cells using Phospho-EGFR (Y1069) Polyclonal Antibody

Published Papers

el at., A thiazole-derived oridonin analogue exhibits antitumor activity by directly and allosterically inhibiting STAT3. In J Biol Chem on 2019 Nov 15;by

Shen X, Zhao L, et al..PMID:31594861, , (2019)

[PMID:31594861](#)

Note: This product is for in vitro research use only and is not intended for use in humans or animals.