

# Casein Kinase II $\alpha$ (Phospho-Tyr255) Polyclonal Antibody

Catalog No: #12247

Orders: [order@signalwayantibody.com](mailto:order@signalwayantibody.com)Support: [tech@signalwayantibody.com](mailto:tech@signalwayantibody.com)

Package Size: #12247-1 50ul #12247-2 100ul

## Description

|                       |   |
|-----------------------|---|
| Product Name          | Casein Kinase II $\alpha$ (Phospho-Tyr255) Polyclonal Antibody  |
| Host Species          | Rabbit  |
| Clonality             | Polyclonal  |
| Purification          | The antibody was affinity-purified from rabbit antiserum by affinity-chromatography using epitope-specific immunogen.   |
| Applications          | WB IHC ELISA  |
| Species Reactivity    | Hu Ms Rt  |
| Specificity           | Phospho-Casein Kinase II $\alpha$ (Y255) Polyclonal Antibody detects endogenous levels of Casein Kinase II $\alpha$ protein only when phosphorylated at Y255. |
| Immunogen Type        | peptide   |
| Immunogen Description | Synthesized peptide derived from human Casein Kinase II $\alpha$ around the phosphorylation site of Y255.   |
| Target Name           | Casein Kinase II $\alpha$   |
| Modification          | Phospho   |
| Other Names           | CSNK2A1; CK2A1; Casein kinase II subunit alpha; CK II alpha   |
| Accession No.         | Swiss-Prot: P68400NCBI Gene ID: 1457  |
| Target Species        | human   |
| SDS-PAGE MW           | 45kd  |
| Concentration         | 1mg/ml  |
| Formulation           | Liquid in PBS containing 50% glycerol, 0.5% BSA and 0.02% sodium azide.   |
| Storage               | Store at -20°C/1 year   |

## Application Details

Western blotting: 1/500 - 1/2000

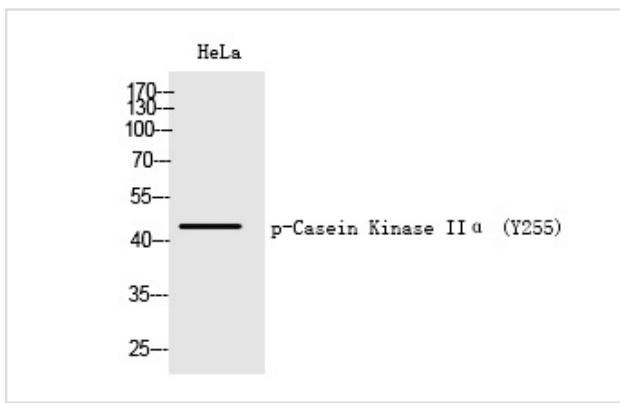
Immunohistochemistry: 1/100 - 1/300

ELISA: 1/10000

Not yet tested in other applications

## Images

Western Blot analysis of HeLa cells using Phospho-Casein Kinase II $\alpha$  (Y255) Polyclonal Antibody



Note: This product is for in vitro research use only and is not intended for use in humans or animals.