

Casein Kinase I α (Phospho-Tyr321) Polyclonal Antibody

Catalog No: #12248

Orders: order@signalwayantibody.comSupport: tech@signalwayantibody.com

Package Size: #12248-1 50ul #12248-2 100ul

Description

Product Name	Casein Kinase I α (Phospho-Tyr321) Polyclonal Antibody
Host Species	Rabbit
Clonality	Polyclonal
Purification	The antibody was affinity-purified from rabbit antiserum by affinity-chromatography using epitope-specific immunogen.
Applications	WB IHC ELISA
Species Reactivity	Hu Ms Rt
Specificity	Phospho-Casein Kinase I α (Y321) Polyclonal Antibody detects endogenous levels of Casein Kinase I α protein only when phosphorylated at Y321.
Immunogen Type	peptide
Immunogen Description	Synthesized peptide derived from human Casein Kinase I α around the phosphorylation site of Y321.
Target Name	Casein Kinase I α
Modification	Phospho
Other Names	CSNK1A1; Casein kinase I isoform alpha; CKI-alpha; CK1
Accession No.	Swiss-Prot: P48729NCBI Gene ID: 1452
Target Species	human
SDS-PAGE MW	35kd
Concentration	1mg/ml
Formulation	Liquid in PBS containing 50% glycerol, 0.5% BSA and 0.02% sodium azide.
Storage	Store at -20°C/1 year

Application Details

Western blotting: 1/500 - 1/2000

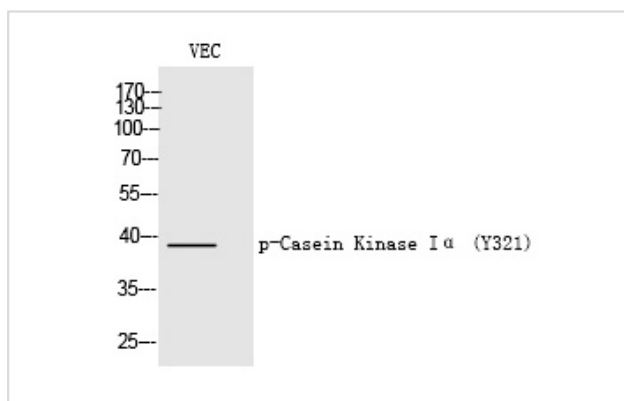
Immunohistochemistry: 1/100 - 1/300

ELISA: 1/5000

Not yet tested in other applications

Images

Western Blot analysis of VEC cells using Phospho-Casein Kinase Kinase I α (Y321) Polyclonal Antibody



Note: This product is for in vitro research use only and is not intended for use in humans or animals.