

## MRE11 (Phospho-Ser264) Polyclonal Antibody

Catalog No: #12249



Package Size: #12249-1 50ul #12249-2 100ul

Orders: [order@signalwayantibody.com](mailto:order@signalwayantibody.com)Support: [tech@signalwayantibody.com](mailto:tech@signalwayantibody.com)

## Description

Product Name	MRE11 (Phospho-Ser264) Polyclonal Antibody
Host Species	Rabbit
Clonality	Polyclonal
Purification	The antibody was affinity-purified from rabbit antiserum by affinity-chromatography using epitope-specific immunogen.
Applications	WB ELISA
Species Reactivity	Hu Ms Rt
Specificity	Phospho-MRE11 (S264) Polyclonal Antibody detects endogenous levels of MRE11 protein only when phosphorylated at S264.
Immunogen Type	peptide
Immunogen Description	Synthesized peptide derived from human MRE11 around the phosphorylation site of S264.
Target Name	MRE11
Modification	Phospho
Other Names	MRE11A; HNGS1; MRE11; Double-strand break repair protein MRE11A; Meiotic recombination 11 homolog 1; MRE11 homolog 1; Meiotic recombination 11 homolog A; MRE11 homolog A
Accession No.	Swiss-Prot: P49959NCBI Gene ID: 4361
Target Species	human
SDS-PAGE MW	80kd
Concentration	1mg/ml
Formulation	Liquid in PBS containing 50% glycerol, 0.5% BSA and 0.02% sodium azide.
Storage	Store at -20°C/1 year

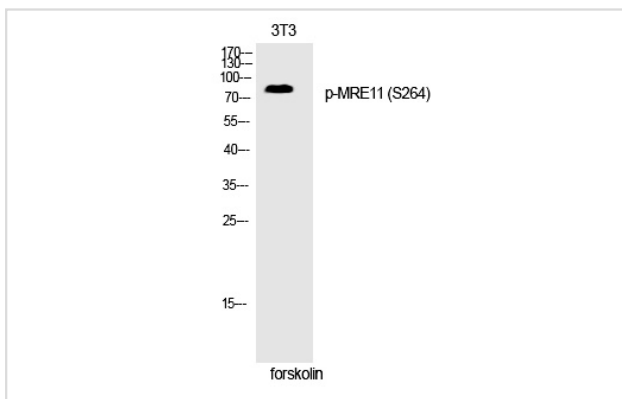
## Application Details

Western blotting: 1/500 - 1/2000

ELISA: 1/5000

Not yet tested in other applications

## Images



Western Blot analysis of 3T3 cells using Phospho-MRE11 (S264) Polyclonal Antibody

Note: This product is for in vitro research use only and is not intended for use in humans or animals.