

## Caspase-8 (Phospho-Tyr380) Polyclonal Antibody

Catalog No: #12252



Package Size: #12252-1 50ul #12252-2 100ul

Orders: [order@signalwayantibody.com](mailto:order@signalwayantibody.com)Support: [tech@signalwayantibody.com](mailto:tech@signalwayantibody.com)

## Description

Product Name	Caspase-8 (Phospho-Tyr380) Polyclonal Antibody
Host Species	Rabbit
Clonality	Polyclonal
Purification	The antibody was affinity-purified from rabbit antiserum by affinity-chromatography using epitope-specific immunogen.
Applications	WB ELISA
Species Reactivity	Hu Ms Rt
Specificity	Phospho-Caspase-8 (Y380) Polyclonal Antibody detects endogenous levels of Caspase-8 protein only when phosphorylated at Y380.
Immunogen Description	Synthesized peptide derived from human Caspase-8 around the phosphorylation site of Y380.
Target Name	Caspase-8
Modification	Phospho
Other Names	CASP8; MCH5; Caspase-8; CASP-8; Apoptotic cysteine protease; Apoptotic protease Mch-5; CAP4; FADD-homologous ICE/ced-3-like protease; FADD-like ICE; FLICE; ICE-like apoptotic protease 5; MORT1-associated ced-3 homolog; MACH
Accession No.	Swiss-Prot: Q14790NCBI Gene ID: 841
Target Species	human
SDS-PAGE MW	55kd
Concentration	1mg/ml
Formulation	Liquid in PBS containing 50% glycerol, 0.5% BSA and 0.02% sodium azide.
Storage	Store at -20°C/1 year

## Application Details

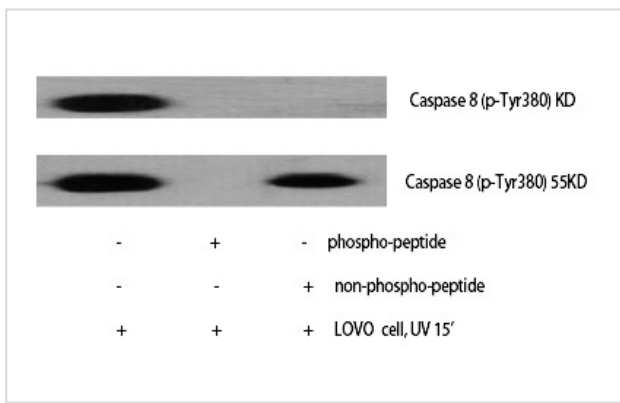
Western blotting: 1/500 - 1/2000

ELISA: 1/10000

Not yet tested in other applications

## Images

Western Blot analysis of LOVO cells using  
Phospho-Caspase-8 (Y380) Polyclonal Antibody



Note: This product is for in vitro research use only and is not intended for use in humans or animals.