

## CaMKK beta antibody

Catalog No: #22541

Orders: [order@signalwayantibody.com](mailto:order@signalwayantibody.com)Support: [tech@signalwayantibody.com](mailto:tech@signalwayantibody.com)

## Description

|                       |  |
|-----------------------|--|
| Product Name          | CaMKK beta antibody  |
| Host Species          | Rabbit   |
| Clonality             | Polyclonal   |
| Purification          | Purified by antigen-affinity chromatography.   |
| Applications          | WB IF  |
| Species Reactivity    | Hu   |
| Immunogen Type        | Peptide  |
| Immunogen Description | Synthetic peptide contain a sequence corresponding to a region within amino acids 1 and 15 of CaMKK beta       |
| Target Name           | CaMKK beta   |
| Accession No.         | NCBI Gene ID: 10645NCBI mRNA#: NM_153500NCBI Protein#: NP_705720   |
| Concentration         | 0.7mg/ml   |
| Formulation           | Supplied in 0.1M Tris-buffered saline with 10% Glycerol (pH7.0). 0.01% Thimerosal was added as a preservative. |
| Storage               | Store at -20°C for long term preservation (recommended). Store at 4°C for short term use.                      |

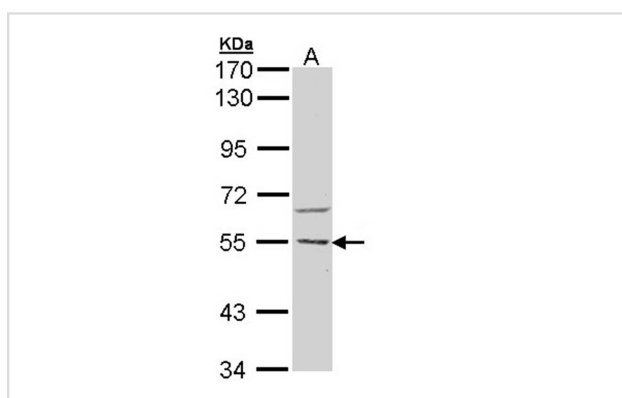
## Application Details

Predicted MW: 55kd

Western blotting: 1:500-1:3000

Immunofluorescence: 1:100-1:200

## Images

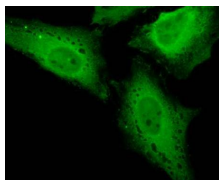


Sample (30 ug of whole cell lysate)

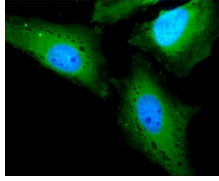
A: H1299

10% SDS PAGE

Primary antibody diluted at 1: 500



Merged with DNA probe



Immunofluorescence analysis of paraformaldehyde-fixed HeLa, using CaMKK beta antibody at 1: 200 dilution.

## Background

The product of this gene belongs to the Serine/Threonine protein kinase family, and to the Ca(2+)/calmodulin-dependent protein kinase subfamily. This protein plays a role in the calcium/calmodulin-dependent (CaM) kinase cascade by phosphorylating the downstream kinases CaMK1 and CaMK4. Seven transcript variants encoding six distinct isoforms have been identified for this gene. Additional splice variants have been described but their full-length nature has not been determined. The identified isoforms exhibit a distinct ability to undergo autophosphorylation and to phosphorylate the downstream kinases. [provided by RefSeq]

Note: This product is for in vitro research use only and is not intended for use in humans or animals.