

## Bcl-6 (Phospho-Ser333) Polyclonal Antibody

Catalog No: #12261



Package Size: #12261-1 50ul #12261-2 100ul

Orders: [order@signalwayantibody.com](mailto:order@signalwayantibody.com)Support: [tech@signalwayantibody.com](mailto:tech@signalwayantibody.com)

## Description

Product Name	Bcl-6 (Phospho-Ser333) Polyclonal Antibody
Host Species	Rabbit
Clonality	Polyclonal
Purification	The antibody was affinity-purified from rabbit antiserum by affinity-chromatography using epitope-specific immunogen.
Applications	WB ELISA
Species Reactivity	Hu Ms Rt
Specificity	Phospho-Bcl-6 (S333) Polyclonal Antibody detects endogenous levels of Bcl-6 protein only when phosphorylated at S333.
Immunogen Type	peptide
Immunogen Description	Synthesized peptide derived from human Bcl-6 around the phosphorylation site of S333.
Target Name	Bcl-6
Modification	Phospho
Other Names	BCL6; BCL5; LAZ3; ZBTB27; ZNF51; B-cell lymphoma 6 protein; BCL-6; B-cell lymphoma 5 protein; BCL-5; Protein LAZ-3; Zinc finger and BTB domain-containing protein 27; Zinc finger protein 51
Accession No.	Swiss-Prot: P41182NCBI Gene ID: 604
Target Species	human
SDS-PAGE MW	79kd
Concentration	1mg/ml
Formulation	Liquid in PBS containing 50% glycerol, 0.5% BSA and 0.02% sodium azide.
Storage	Store at -20°C/1 year

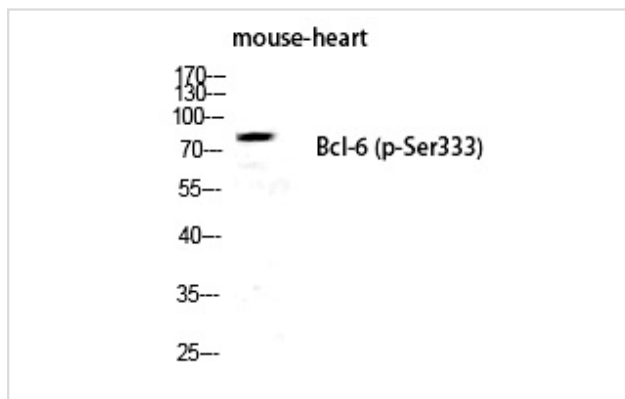
## Application Details

Western blotting: 1/500 - 1/2000

ELISA: 1/5000

Not yet tested in other applications

## Images



Western Blot analysis of MOUSE-HEART cells using Phospho-Bcl-6 (S333) Polyclonal Antibody

---

Note: This product is for in vitro research use only and is not intended for use in humans or animals.