

CD5 (Phospho-Tyr453) Polyclonal Antibody

Catalog No: #12269



Package Size: #12269-1 50ul #12269-2 100ul

Orders: order@signalwayantibody.comSupport: tech@signalwayantibody.com

Description

Product Name	CD5 (Phospho-Tyr453) Polyclonal Antibody
Host Species	Rabbit
Clonality	Polyclonal
Purification	The antibody was affinity-purified from rabbit antiserum by affinity-chromatography using epitope-specific immunogen.
Applications	WB IHC IF ELISA
Species Reactivity	Hu Ms Rt
Specificity	Phospho-CD5 (Y453) Polyclonal Antibody detects endogenous levels of CD5 protein only when phosphorylated at Y453.
Immunogen Description	The antiserum was produced against synthesized peptide derived from human CD5 around the phosphorylation site of Tyr453. AA range:421-470
Target Name	CD5
Modification	Phospho
Other Names	CD5; LEU1; T-cell surface glycoprotein CD5; Lymphocyte antigen T1/Leu-1; CD antigen CD5
Accession No.	Swiss-Prot: P06127NCBI Gene ID: 921
Target Species	human
SDS-PAGE MW	40kd
Concentration	1mg/ml
Formulation	Liquid in PBS containing 50% glycerol, 0.5% BSA and 0.02% sodium azide.
Storage	Store at -20°C/1 year

Application Details

Western blotting: 1/500 - 1/2000

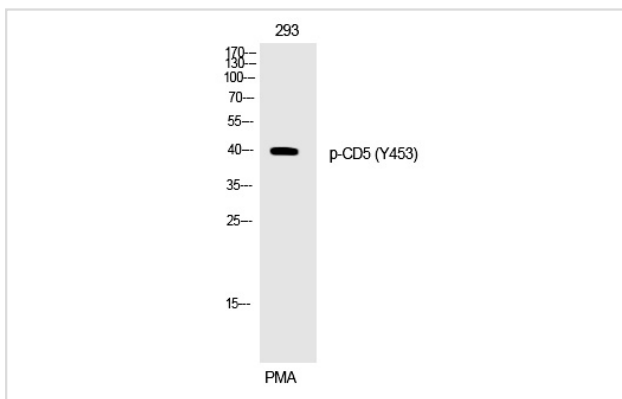
Immunohistochemistry: 1/100 - 1/300

Immunofluorescence: 1/200 - 1/1000

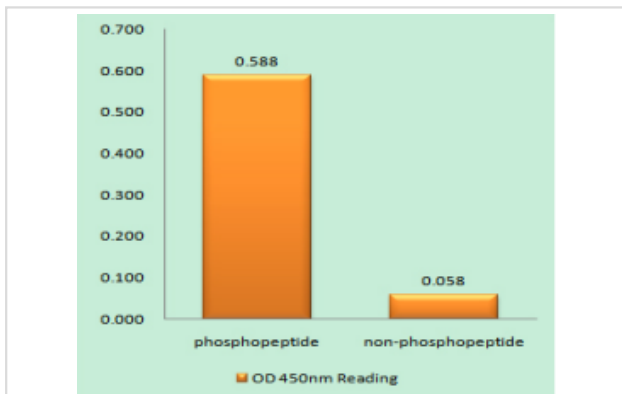
ELISA: 1/20000

Not yet tested in other applications

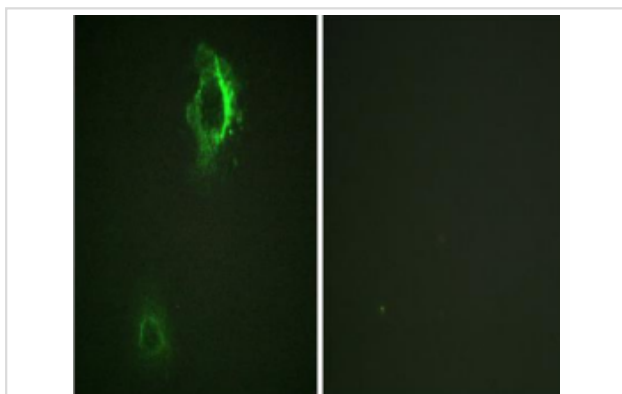
Images



Western Blot analysis of 293 cells using Phospho-CD5 (Y453) Polyclonal Antibody



Enzyme-Linked Immunosorbent Assay (Phospho-ELISA) for Immunogen Phosphopeptide (Phospho-left) and NonPhosphopeptide (Phospho-right), using CD5 (Phospho-Tyr453) Antibody



Immunofluorescence analysis of HepG2 cells, using CD5 (Phospho-Tyr453) Antibody. The picture on the right is blocked with the phospho peptide.

Note: This product is for in vitro research use only and is not intended for use in humans or animals.