

## EphB1/2 (Phospho-Tyr594/604) Polyclonal Antibody

Catalog No: #12273



Package Size: #12273-1 50ul #12273-2 100ul

Orders: [order@signalwayantibody.com](mailto:order@signalwayantibody.com)Support: [tech@signalwayantibody.com](mailto:tech@signalwayantibody.com)

## Description

Product Name	EphB1/2 (Phospho-Tyr594/604) Polyclonal Antibody
Host Species	Rabbit
Clonality	Polyclonal
Purification	The antibody was affinity-purified from rabbit antiserum by affinity-chromatography using epitope-specific immunogen.
Applications	WB IF ELISA
Species Reactivity	Hu Ms Rt
Specificity	Phospho-EphB1/2 (Y594/604) Polyclonal Antibody detects endogenous levels of EphB1/2 protein only when phosphorylated at Y594/604.
Immunogen Type	peptide
Immunogen Description	Synthesized peptide derived from human EphB1/2 around the phosphorylation site of Y594/604.
Target Name	EphB1/2
Modification	Phospho
Other Names	EPHB1; ELK; EPHT2; HEK6; NET; Ephrin type-B receptor 1; ELK; EPH tyrosine kinase 2; EPH-like kinase 6; EK6; hEK6; Neuronally-expressed EPH-related tyrosine kinase; NET; Tyrosine-protein kinase receptor EPH-2; EPHB2; DRT; EPHT3; EPTH3; ERK;
Accession No.	Swiss-Prot: P54762/P29323NCBI Gene ID: 2047/1969
Target Species	human
SDS-PAGE MW	110kd
Concentration	1mg/ml
Formulation	Liquid in PBS containing 50% glycerol, 0.5% BSA and 0.02% sodium azide.
Storage	Store at -20°C/1 year

## Application Details

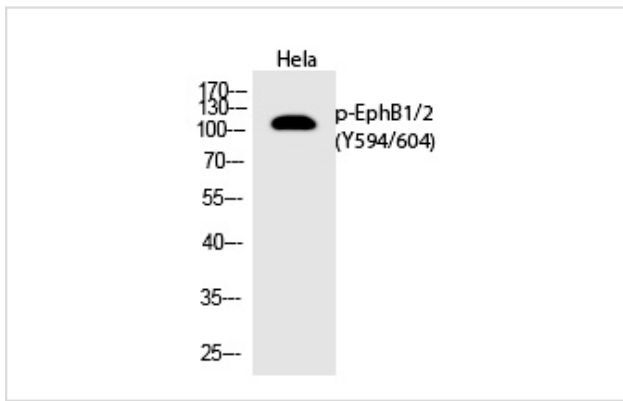
Western blotting: 1/500 - 1/2000

Immunofluorescence: 1/200 - 1/1000

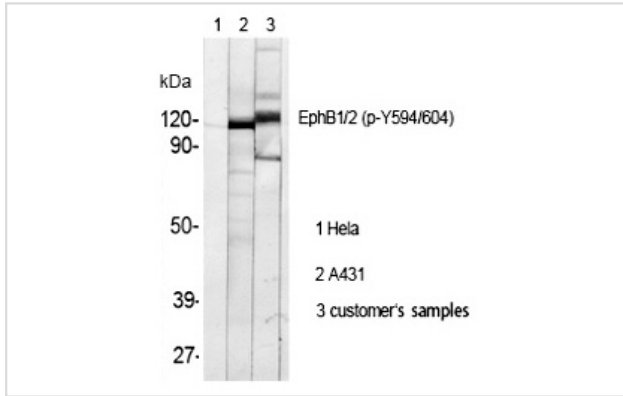
ELISA: 1/5000

Not yet tested in other applications

## Images



Western Blot analysis of HeLa cells using Phospho-EphB1/2 (Y594/604) Polyclonal Antibody



Western Blot analysis of HELA A431 cells using Phospho-EphB1/2 (Y594/604) Polyclonal Antibody

Note: This product is for in vitro research use only and is not intended for use in humans or animals.