

HSP90 $\beta$  (Phospho-Ser226) Polyclonal Antibody

Catalog No: #12277



Package Size: #12277-1 50ul #12277-2 100ul

Orders: [order@signalwayantibody.com](mailto:order@signalwayantibody.com)Support: [tech@signalwayantibody.com](mailto:tech@signalwayantibody.com)

## Description

Product Name	HSP90 $\beta$ (Phospho-Ser226) Polyclonal Antibody
Host Species	Rabbit
Clonality	Polyclonal
Purification	The antibody was affinity-purified from rabbit antiserum by affinity-chromatography using epitope-specific immunogen.
Applications	WB IHC IF ELISA
Species Reactivity	Hu Ms Rt
Specificity	Phospho-HSP90 $\beta$ (S226) Polyclonal Antibody detects endogenous levels of HSP90 $\beta$ protein only when phosphorylated at S226.
Immunogen Type	peptide
Immunogen Description	Synthesized peptide derived from human HSP90 $\beta$ around the phosphorylation site of S226.
Target Name	HSP90 $\beta$
Modification	Phospho
Other Names	HSP90AB1; HSP90B; HSPC2; HSPCB; Heat shock protein HSP 90-beta; HSP 90; Heat shock 84 kDa; HSP 84; HSP84
Accession No.	Swiss-Prot: P08238NCBI Gene ID: 3326
Target Species	human
SDS-PAGE MW	83kd
Concentration	1mg/ml
Formulation	Liquid in PBS containing 50% glycerol, 0.5% BSA and 0.02% sodium azide.
Storage	Store at -20°C/1 year

## Application Details

Western blotting: 1/500 - 1/2000

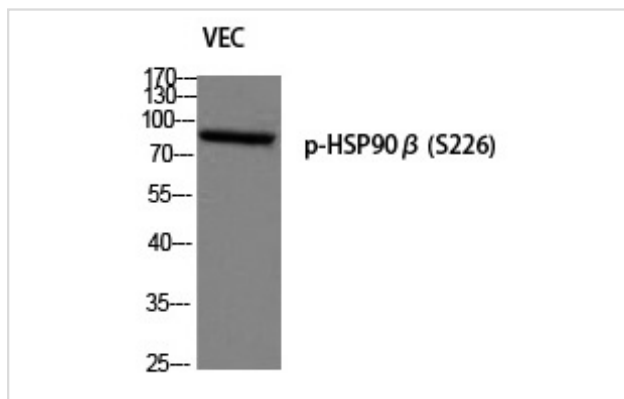
Immunohistochemistry: 1/100 - 1/300

Immunofluorescence: 1/200 - 1/1000

ELISA: 1/10000

Not yet tested in other applications

## Images



Western blot analysis of VEC using p-HSP90β (S226) antibody.

Note: This product is for in vitro research use only and is not intended for use in humans or animals.