

## Flt-1 (Phospho-Tyr1333) Polyclonal Antibody

Catalog No: #12310



Package Size: #12310-1 50ul #12310-2 100ul

Orders: [order@signalwayantibody.com](mailto:order@signalwayantibody.com)Support: [tech@signalwayantibody.com](mailto:tech@signalwayantibody.com)

## Description

Product Name	Flt-1 (Phospho-Tyr1333) Polyclonal Antibody
Host Species	Rabbit
Clonality	Polyclonal
Purification	The antibody was affinity-purified from rabbit antiserum by affinity-chromatography using epitope-specific immunogen.
Applications	WB IHC ELISA
Species Reactivity	Hu Ms Rt
Specificity	Phospho-Flt-1 (Y1333) Polyclonal Antibody detects endogenous levels of Flt-1 protein only when phosphorylated at Y1333.
Immunogen Type	peptide
Immunogen Description	Synthesized peptide derived from human Flt-1 around the phosphorylation site of Y1333.
Target Name	Flt-1
Modification	Phospho
Other Names	FLT1; FLT; FRT; VEGFR1; Vascular endothelial growth factor receptor 1; VEGFR-1; Fms-like tyrosine kinase 1; FLT-1; Tyrosine-protein kinase FRT; Tyrosine-protein kinase receptor FLT; FLT; Vascular permeability factor receptor
Accession No.	Swiss-Prot: P17948NCBI Gene ID: 2321
Target Species	human
SDS-PAGE MW	151kd
Concentration	1mg/ml
Formulation	Liquid in PBS containing 50% glycerol, 0.5% BSA and 0.02% sodium azide.
Storage	Store at -20°C/1 year

## Application Details

Western blotting: 1/500 - 1/2000

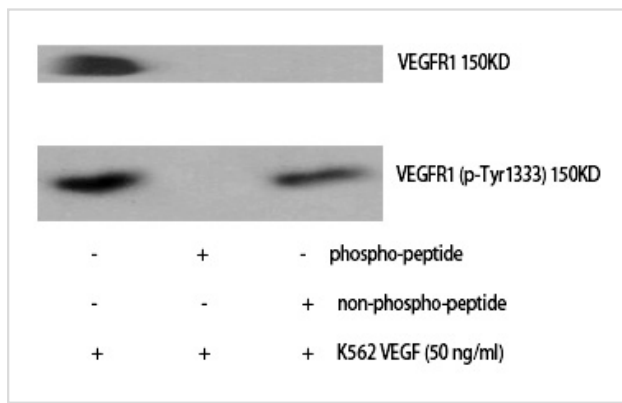
Immunohistochemistry: 1/100 - 1/300

ELISA: 1/40000

Not yet tested in other applications

## Images

Western Blot analysis of K562+VEGF cells using Phospho-Flt-1 (Y1333) Polyclonal Antibody



Note: This product is for in vitro research use only and is not intended for use in humans or animals.