

Krs-1/2 (Phospho-Thr183) Polyclonal Antibody

Catalog No: #12313



Package Size: #12313-1 50ul #12313-2 100ul

Orders: order@signalwayantibody.comSupport: tech@signalwayantibody.com

Description

Product Name	Krs-1/2 (Phospho-Thr183) Polyclonal Antibody
Host Species	Rabbit
Clonality	Polyclonal
Purification	The antibody was affinity-purified from rabbit antiserum by affinity-chromatography using epitope-specific immunogen.
Applications	WB IHC ELISA
Species Reactivity	Hu Ms
Specificity	Phospho-Krs-1/2 (T183) Polyclonal Antibody detects endogenous levels of Krs-1/2 protein only when phosphorylated at T183.
Immunogen Type	peptide
Immunogen Description	Synthesized peptide derived from human Krs-1/2 around the phosphorylation site of T183.
Target Name	Krs-1/2
Modification	Phospho
Other Names	STK3; KRS1; MST2; Serine/threonine-protein kinase 3; Mammalian STE20-like protein kinase 2; MST-2; STE20-like kinase MST2; Serine/threonine-protein kinase Krs-1; STK4; KRS2; MST1; Serine/threonine-protein kinase 4; Mammalian STE20-like prot
Accession No.	Swiss-Prot: Q13188/Q13043NCBI Gene ID: 6789
Target Species	human
SDS-PAGE MW	60kd
Concentration	1mg/ml
Formulation	Liquid in PBS containing 50% glycerol, 0.5% BSA and 0.02% sodium azide.
Storage	Store at -20°C/1 year

Application Details

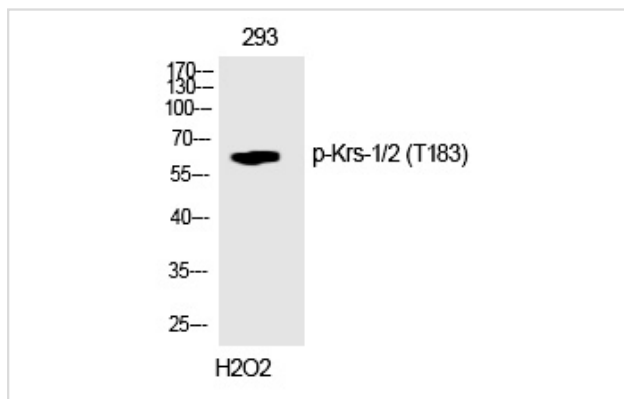
Western blotting: 1/500 - 1/2000

Immunohistochemistry: 1/100 - 1/300

ELISA: 1/40000

Not yet tested in other applications

Images



Western Blot analysis of 293 cells using Phospho-Krs-1/2 (T183) Polyclonal Antibody

Note: This product is for in vitro research use only and is not intended for use in humans or animals.