

NMDA ζ 1 (Phospho-Ser896) Polyclonal Antibody

Catalog No: #12314



Package Size: #12314-1 50ul #12314-2 100ul

Orders: order@signalwayantibody.comSupport: tech@signalwayantibody.com

Description

Product Name	NMDA ζ 1 (Phospho-Ser896) Polyclonal Antibody
Host Species	Rabbit
Clonality	Polyclonal
Purification	The antibody was affinity-purified from rabbit antiserum by affinity-chromatography using epitope-specific immunogen.
Applications	WB IHC ELISA
Species Reactivity	Hu Ms Rt
Specificity	Phospho-NMDA ζ 1 (S896) Polyclonal Antibody detects endogenous levels of NMDA ζ 1 protein only when phosphorylated at S896.
Immunogen Type	peptide
Immunogen Description	Synthesized peptide derived from human NMDA ζ 1 around the phosphorylation site of S896.
Target Name	NMDA ζ 1
Modification	Phospho
Other Names	GRIN1; NMDAR1; Glutamate [NMDA] receptor subunit zeta-1; N-methyl-D-aspartate receptor subunit NR1; NMD-R1
Accession No.	Swiss-Prot: Q05586NCBI Gene ID: 2902
Target Species	human
SDS-PAGE MW	105kd
Concentration	1mg/ml
Formulation	Liquid in PBS containing 50% glycerol, 0.5% BSA and 0.02% sodium azide.
Storage	Store at -20°C/1 year

Application Details

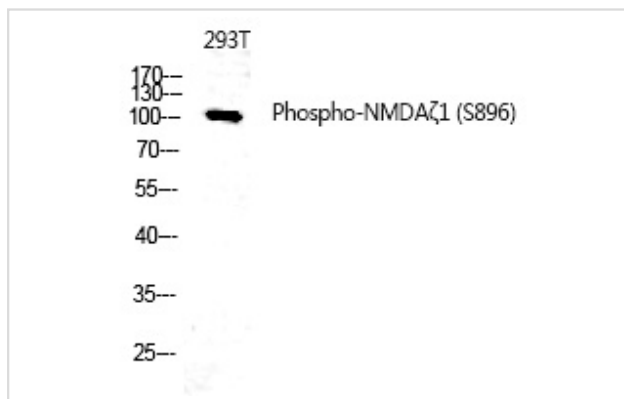
Western blotting: 1/500 - 1/2000

Immunohistochemistry: 1/100 - 1/300

ELISA: 1/40000

Not yet tested in other applications

Images



Western Blot analysis of 293T using Phospho-NMDAζ1 (S896) Polyclonal Antibody.

Note: This product is for in vitro research use only and is not intended for use in humans or animals.