

PLC β 3 (Phospho-Ser537) Polyclonal Antibody

Catalog No: #12318



Package Size: #12318-1 50ul #12318-2 100ul

Orders: order@signalwayantibody.comSupport: tech@signalwayantibody.com

Description

| | |
|-----------------------|---|
| Product Name | PLC β 3 (Phospho-Ser537) Polyclonal Antibody |
| Host Species | Rabbit |
| Clonality | Polyclonal |
| Purification | The antibody was affinity-purified from rabbit antiserum by affinity-chromatography using epitope-specific immunogen. |
| Applications | WB IHC ELISA |
| Species Reactivity | Hu Ms Rt |
| Specificity | Phospho-PLC β 3 (S537) Polyclonal Antibody detects endogenous levels of PLC β 3 protein only when phosphorylated at S537. |
| Immunogen Type | peptide |
| Immunogen Description | Synthesized peptide derived from human PLC β 3 around the phosphorylation site of S537. |
| Target Name | PLC β 3 |
| Modification | Phospho |
| Other Names | PLCB3; 1-phosphatidylinositol 4; 5-bisphosphate phosphodiesterase beta-3; Phosphoinositide phospholipase C-beta-3; Phospholipase C-beta-3; PLC-beta-3 |
| Accession No. | Swiss-Prot: Q01970NCBI Gene ID: 5331 |
| Target Species | human |
| SDS-PAGE MW | 150kd |
| Concentration | 1mg/ml |
| Formulation | Liquid in PBS containing 50% glycerol, 0.5% BSA and 0.02% sodium azide. |
| Storage | Store at -20°C/1 year |

Application Details

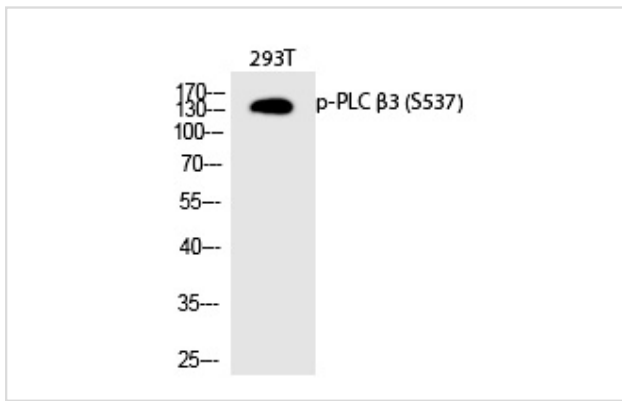
Western blotting: 1/500 - 1/2000

Immunohistochemistry: 1/100 - 1/300

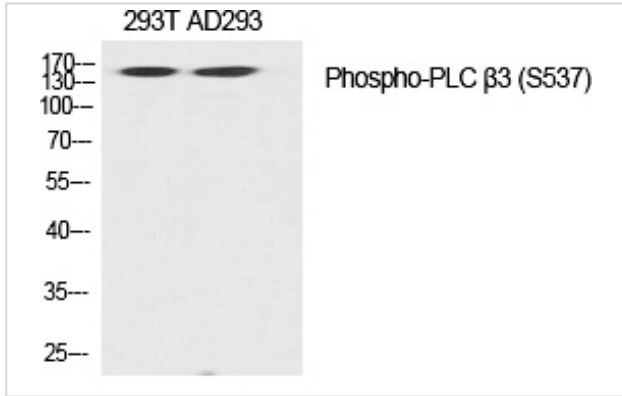
ELISA: 1/10000

Not yet tested in other applications

Images



Western Blot analysis of 293T cells using Phospho-PLC β 3 (S537) Polyclonal Antibody



Western Blot analysis of 293T AD293 cells using Phospho-PLC β 3 (S537) Polyclonal Antibody

Note: This product is for in vitro research use only and is not intended for use in humans or animals.