

PFK-2 car (Phospho-Ser483) Polyclonal Antibody

Catalog No: #12319



Package Size: #12319-1 50ul #12319-2 100ul

Orders: order@signalwayantibody.comSupport: tech@signalwayantibody.com

Description

Product Name	PFK-2 car (Phospho-Ser483) Polyclonal Antibody
Host Species	Rabbit
Clonality	Polyclonal
Purification	The antibody was affinity-purified from rabbit antiserum by affinity-chromatography using epitope-specific immunogen.
Applications	WB IHC ELISA
Species Reactivity	Hu Ms Rt
Specificity	Phospho-PFK-2 car (S483) Polyclonal Antibody detects endogenous levels of PFK-2 car protein only when phosphorylated at S483.
Immunogen Type	peptide
Immunogen Description	Synthesized peptide derived from human PFK-2 car around the phosphorylation site of S483.
Target Name	PFK-2 car
Modification	Phospho
Other Names	PFKFB2; 6-phosphofructo-2-kinase/fructose-2; 6-bisphosphatase 2; 6PF-2-K/Fru-2,6-P2ase 2; PFK/FBPase 2; 6PF-2-K/Fru-2,6-P2ase heart-type isozyme
Accession No.	Swiss-Prot: O60825NCBI Gene ID: 5208
Target Species	human
SDS-PAGE MW	58kd
Concentration	1mg/ml
Formulation	Liquid in PBS containing 50% glycerol, 0.5% BSA and 0.02% sodium azide.
Storage	Store at -20°C/1 year

Application Details

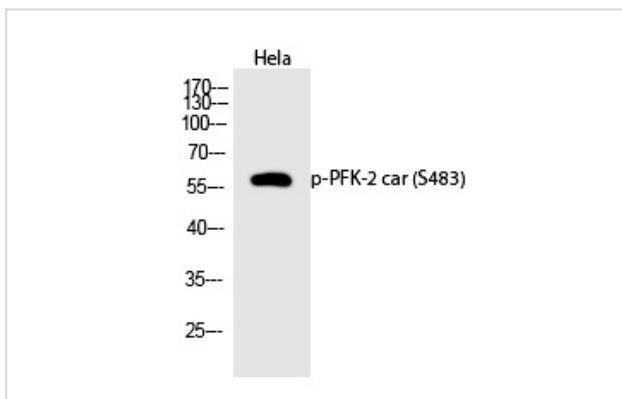
Western blotting: 1/500 - 1/2000

Immunohistochemistry: 1/100 - 1/300

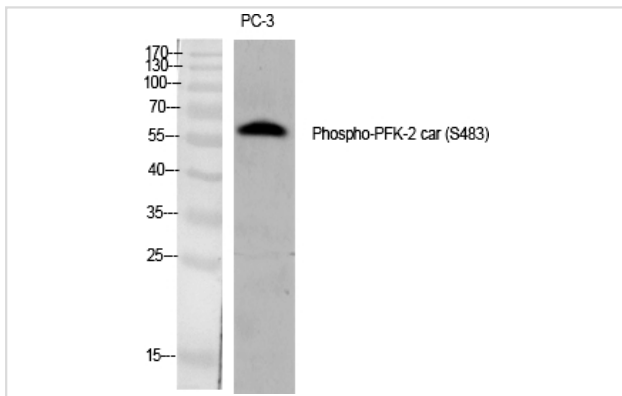
ELISA: 1/40000

Not yet tested in other applications

Images



Western Blot analysis of HeLa cells using Phospho-PFK-2 car (S483) Polyclonal Antibody



Western Blot analysis of PC3 cells using Phospho-PFK-2 car (S483) Polyclonal Antibody

Published Papers

el at., EGFR-Phosphorylated Platelet Isoform of Phosphofructokinase 1 Promotes PI3K Activation. IN Mol Cell. On 2018 Apr 19 by Lee JH, Liu R et al.. PMID:29677490, (2018)

[PMID:29677490](#)

Note: This product is for in vitro research use only and is not intended for use in humans or animals.