

p38 (Phospho-Tyr323) Polyclonal Antibody

Catalog No: #12322



Package Size: #12322-1 50ul #12322-2 100ul

Orders: order@signalwayantibody.comSupport: tech@signalwayantibody.com

Description

Product Name	p38 (Phospho-Tyr323) Polyclonal Antibody
Host Species	Rabbit
Clonality	Polyclonal
Purification	The antibody was affinity-purified from rabbit antiserum by affinity-chromatography using epitope-specific immunogen.
Applications	WB IHC ELISA IF
Species Reactivity	Hu Ms Rt
Specificity	Phospho-p38 (Y323) Polyclonal Antibody detects endogenous levels of p38 protein only when phosphorylated at Y323.
Immunogen Description	Synthesized peptide derived from human p38 around the phosphorylation site of Y323.
Target Name	p38
Modification	Phospho
Other Names	MAPK14; CSBP; CSBP1; CSBP2; CSPB1; MXI2; SAPK2A; Mitogen-activated protein kinase 14; MAP kinase 14; MAPK 14; Cytokine suppressive anti-inflammatory drug-binding protein; CSAID-binding protein; CSBP; MAP kinase MXI2; MAX-interacting protein
Accession No.	Swiss-Prot: Q16539NCBI Gene ID: 1432
Target Species	human
SDS-PAGE MW	35kd
Concentration	1mg/ml
Formulation	Liquid in PBS containing 50% glycerol, 0.5% BSA and 0.02% sodium azide.
Storage	Store at -20°C/1 year

Application Details

Western blotting: 1/500 - 1/2000

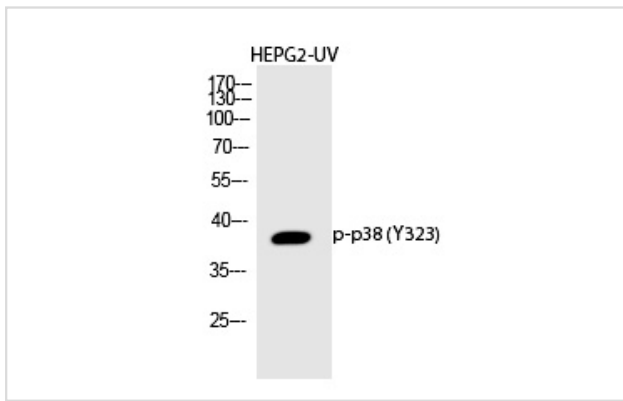
Immunohistochemistry: 1/100 - 1/300

IF: 1:50-200

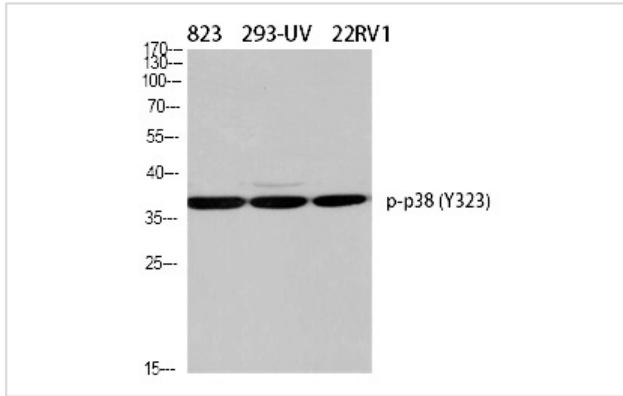
ELISA: 1/5000

Not yet tested in other applications

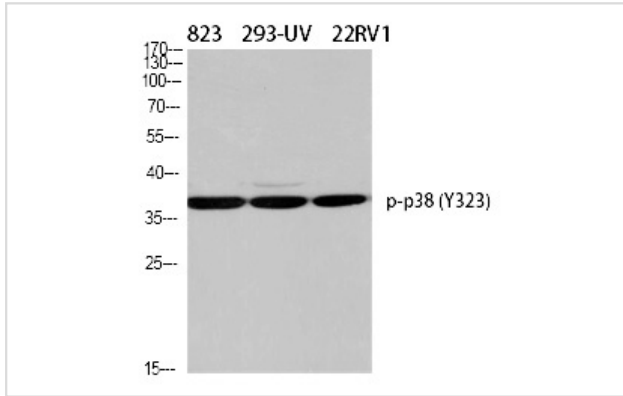
Images



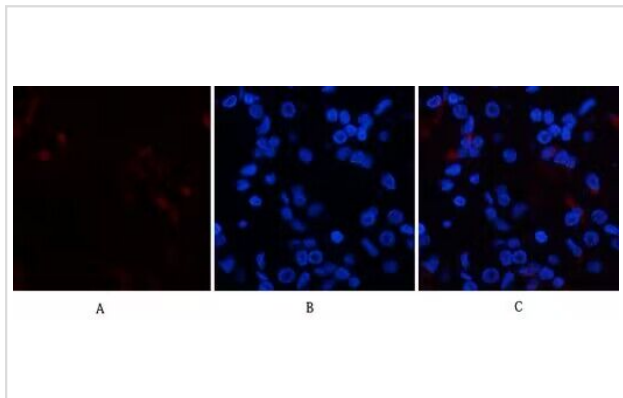
Western Blot analysis of HEPG2-UV cells using Phospho-p38 (Y323) Polyclonal Antibody



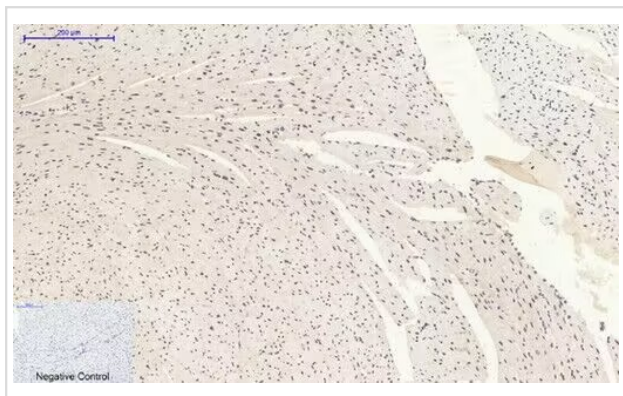
Western Blot analysis of 823 293-UV 22RV1 cells using Phospho-p38 (Y323) Polyclonal Antibody



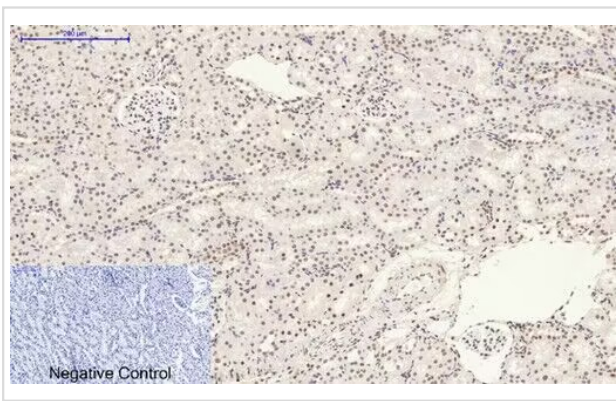
Western Blot analysis of HELA using Phospho-p38 (Y323) Polyclonal Antibody.



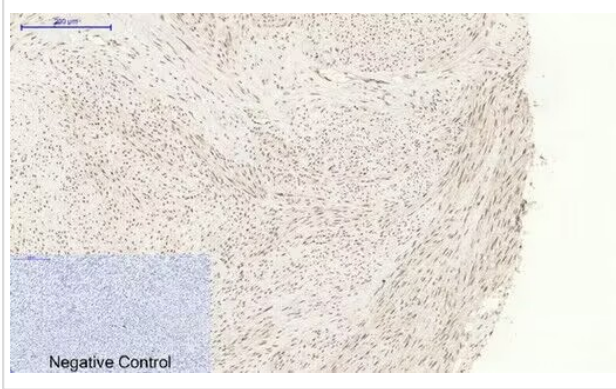
Immunofluorescence analysis of human-stomach tissue.



Immunohistochemical analysis of paraffin-embedded Mouse-heart tissue.



Immunohistochemical analysis of paraffin-embedded Rat-kidney tissue.



Immunohistochemical analysis of paraffin-embedded Human-uterus tissue.

Published Papers

et al., Targeting the non-ATP-binding pocket of the MAP kinase p38 η 1 \rightarrow mediates a novel mechanism of cytotoxicity in cutaneous T-cell lymphoma (CTCL). In FEBS Lett on 2021 Oct by Xu Hannah Zhang, Chih-Hong Chen, et al..PMID:34455585, , (2021)

[PMID:34455585](#)

et al., Confirming whether novel rhein derivative 4a induces paraptosis-like cell death by endoplasmic reticulum stress in ovarian cancer cells. In Eur J Pharmacol on 2020 Nov 5 by Hui-Feng Pang, Xin-Xiao Li, et al..PMID:32890460, , (2020)

[PMID:32890460](#)

Note: This product is for in vitro research use only and is not intended for use in humans or animals.