

MEK-7 (Phospho-Ser271) Polyclonal Antibody

Catalog No: #12339



Package Size: #12339-1 50ul #12339-2 100ul

Orders: order@signalwayantibody.comSupport: tech@signalwayantibody.com

Description

Product Name	MEK-7 (Phospho-Ser271) Polyclonal Antibody
Host Species	Rabbit
Clonality	Polyclonal
Purification	The antibody was affinity-purified from rabbit antiserum by affinity-chromatography using epitope-specific immunogen.
Applications	WB IHC ELISA
Species Reactivity	Hu Ms Rt
Specificity	Phospho-MEK-7 (S271) Polyclonal Antibody detects endogenous levels of MEK-7 protein only when phosphorylated at S271.
Immunogen Type	peptide
Immunogen Description	Synthesized peptide derived from human MEK-7 around the phosphorylation site of S271.
Target Name	MEK-7
Modification	Phospho
Other Names	MAP2K7; JNKK2; MEK7; MKK7; PRKMK7; SKK4; Dual specificity mitogen-activated protein kinase kinase 7; MAP kinase kinase 7; MAPKK 7; JNK-activating kinase 2; MAPK/ERK kinase 7; MEK 7; Stress-activated protein kinase kinase 4; SAPK kinase 4; S
Accession No.	Swiss-Prot: O14733NCBI Gene ID: 5609
Target Species	human
SDS-PAGE MW	47kd
Concentration	1mg/ml
Formulation	Liquid in PBS containing 50% glycerol, 0.5% BSA and 0.02% sodium azide.
Storage	Store at -20°C/1 year

Application Details

Western blotting: 1/500 - 1/2000

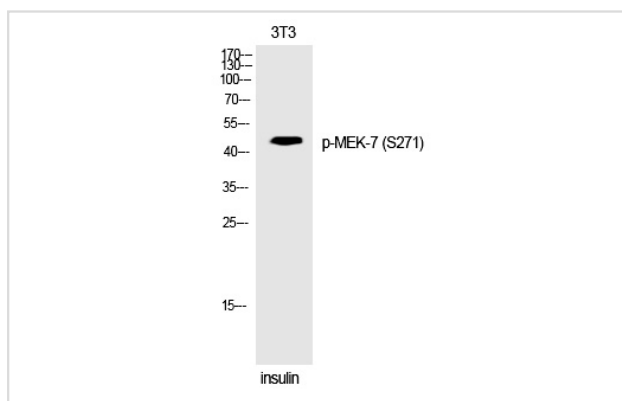
Immunohistochemistry: 1/100 - 1/300

ELISA: 1/20000

Not yet tested in other applications

Images

Western Blot analysis of 3T3 cells using Phospho-MEK-7 (S271) Polyclonal Antibody



Note: This product is for in vitro research use only and is not intended for use in humans or animals.