

## SLP-76 (Phospho-Tyr128) Polyclonal Antibody

Catalog No: #12341



Package Size: #12341-1 50ul #12341-2 100ul

Orders: [order@signalwayantibody.com](mailto:order@signalwayantibody.com)Support: [tech@signalwayantibody.com](mailto:tech@signalwayantibody.com)

## Description

Product Name	SLP-76 (Phospho-Tyr128) Polyclonal Antibody
Host Species	Rabbit
Clonality	Polyclonal
Purification	The antibody was affinity-purified from rabbit antiserum by affinity-chromatography using epitope-specific immunogen.
Applications	WB IHC ELISA
Species Reactivity	Hu Ms Rt
Specificity	Phospho-SLP-76 (Y128) Polyclonal Antibody detects endogenous levels of SLP-76 protein only when phosphorylated at Y128.
Immunogen Type	peptide
Immunogen Description	Synthesized peptide derived from human SLP-76 around the phosphorylation site of Y128.
Target Name	SLP-76
Modification	Phospho
Other Names	LCP2; Lymphocyte cytosolic protein 2; SH2 domain-containing leukocyte protein of 76 kDa; SLP-76 tyrosine phosphoprotein; SLP76
Accession No.	Swiss-Prot: Q13094NCBI Gene ID: 3937
Target Species	human
SDS-PAGE MW	75kd
Concentration	1mg/ml
Formulation	Liquid in PBS containing 50% glycerol, 0.5% BSA and 0.02% sodium azide.
Storage	Store at -20°C/1 year

## Application Details

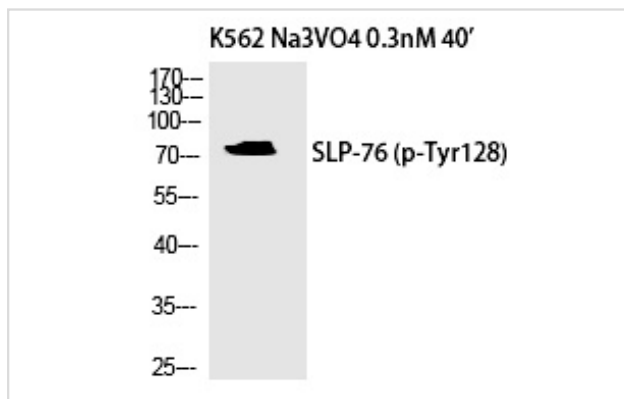
Western blotting: 1/500 - 1/2000

Immunohistochemistry: 1/100 - 1/300

ELISA: 1/5000

Not yet tested in other applications

## Images



Western Blot analysis of K562 cells using Phospho-SLP-76 (Y128) Polyclonal Antibody

---

Note: This product is for in vitro research use only and is not intended for use in humans or animals.