

## cPLA2 (Phospho-Ser505) Polyclonal Antibody

Catalog No: #12349



Package Size: #12349-1 50ul #12349-2 100ul

Orders: [order@signalwayantibody.com](mailto:order@signalwayantibody.com)Support: [tech@signalwayantibody.com](mailto:tech@signalwayantibody.com)

## Description

Product Name	cPLA2 (Phospho-Ser505) Polyclonal Antibody
Host Species	Rabbit
Clonality	Polyclonal
Purification	The antibody was affinity-purified from rabbit antiserum by affinity-chromatography using epitope-specific immunogen.
Applications	WB IHC IF ELISA
Species Reactivity	Hu Ms Rt
Specificity	Phospho-cPLA2 (S505) Polyclonal Antibody detects endogenous levels of cPLA2 protein only when phosphorylated at S505.
Immunogen Type	peptide
Immunogen Description	Synthesized peptide derived from human cPLA2 around the phosphorylation site of S505.
Target Name	cPLA2
Modification	Phospho
Other Names	PLA2G4A; CPLA2; PLA2G4; Cytosolic phospholipase A2; cPLA2; Phospholipase A2 group IVA
Accession No.	Swiss-Prot: P47712NCBI Gene ID: 5321
Target Species	human
SDS-PAGE MW	110kd
Concentration	1mg/ml
Formulation	Liquid in PBS containing 50% glycerol, 0.5% BSA and 0.02% sodium azide.
Storage	Store at -20°C/1 year

## Application Details

Western blotting: 1/500 - 1/2000

Immunohistochemistry: 1/100 - 1/300

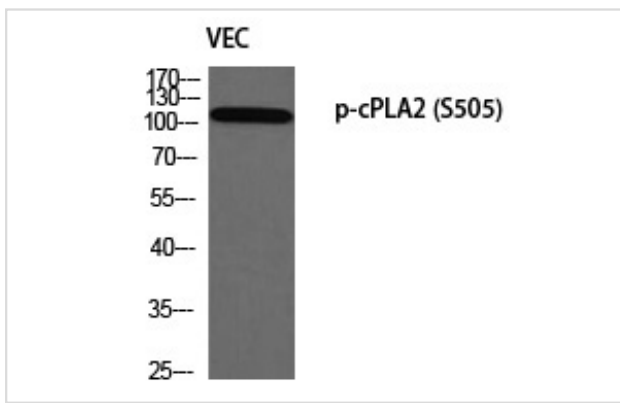
Immunofluorescence: 1/200 - 1/1000

ELISA: 1/10000

Not yet tested in other applications

## Images

Western blot analysis of VEC using p-cPLA2 (S505) antibody.



## Published Papers

el at., TRPC5 is essential in endothelium-dependent contraction of aorta from diet-induced obese mice, , (2022)

PMID:

Note: This product is for in vitro research use only and is not intended for use in humans or animals.